

2021 SOCIAL CONTRIBUTION IMPACT REPORT



PART OF
A BETTER
FUTURE



As a Western Australian energy company with domestic and international operations, we are proud to be part of the diverse communities in which we work.

We recognise the importance of our role in delivering mutual and sustainable social outcomes for those communities and continue to look for opportunities to create positive impacts.

Our genuine, long-term relationships with our stakeholders and host communities have been built over more than three decades, with the aim of increasing capacity and capability at the heart of every partnership.

2021 marked the commencement of a new five-year Social Contribution Strategy that identifies three social outcome areas to further our ability to support community development and focus on long-term outcomes.

Cover image: Red Air – Songs for Peace concert installation, presented in partnership with Kaye and Sharon Warrie (pictured), Big hART and the Roebourne community. Photograph by Chris Gurney, courtesy of the Ngarluma Yindjibarndi Foundation Limited.

OUR SOCIAL OUTCOMES

IMPROVE KNOWLEDGE

Environment and cultural heritage

Climate change and energy



Through our partners, we are raising awareness and understanding of the environment, climate change, energy and cultural heritage.

CREATE OPPORTUNITIES

Early childhood development and education

Employment and economic participation



Our partnerships create quality education and lifelong learning opportunities, support community employment and drive economic diversification.

BUILD RESILIENCE

Wellbeing

Community identity



We collaborate with our partners to support safe, vibrant and sustainable communities.

In 2021, we established new partnerships to support the environment, climate change and cultural heritage to align with our strategic focus on improving knowledge outcomes. We will continue to work with our community partners to focus on outcomes that positively contribute to the targets outlined in Woodside's new Reconciliation Action Plan and Inclusion and Diversity Strategy.

The importance of demonstrating our social impact will continue to underpin how we shape existing and new partnerships, with emphasis placed on outcomes and impact rather than outputs.

Supporting the United Nations Sustainable Development Goals

The United Nations Sustainable Development Goals (SDGs) aim to address some of the world's most urgent economic, social and environmental challenges.




In 2020, a review of our SDG strategy resulted in a revised focus on a broader suite of primary and secondary SDGs that better reflect our contribution to the global sustainability agenda. Our Social Contribution Strategy compliments this sub-set of the goals and provides a framework for investment in our global communities of interest.

We progressed our efforts across the year to help deliver on our social contribution aspirations through new community partnerships and continued support for our existing partner organisations.

SUSTAINABLE DEVELOPMENT GOALS



Visit [woodside.com.au/sustainability](https://www.woodside.com.au/sustainability) to read our 2021 Sustainable Development Report and learn more about Woodside's SDGs.

SDG goal	Social contribution aspiration	Progress
 IMPROVE KNOWLEDGE	SDG 7 Affordable and Clean Energy	<ul style="list-style-type: none"> » We collaborate with both government and non-government research organisations, academic institutions and scientific professionals to build our understanding of the diverse environments in which we work and the impact of climate change.
	SDG II Sustainable Cities and Communities	<ul style="list-style-type: none"> » We will continue to share this knowledge transparently with governments, regulators and communities to support better environmental outcomes.
	SDG 14 Life Below Water	<ul style="list-style-type: none"> » Our ongoing partnerships with local Indigenous organisations will help to build and share knowledge on unique heritage and cultural values.
	SDG 15 Life on Land	<ul style="list-style-type: none"> » We collaborate with both government and non-government research organisations, academic institutions and scientific professionals to build our understanding of the diverse environments in which we work and the impact of climate change.
 CREATE OPPORTUNITIES	SDG 4 Quality Education	<ul style="list-style-type: none"> » Renewed our partnership with Conservation Volunteers Australia to support Revive, a program that engages employees to protect and enhance remaining wetlands for long-term viability in the Perth region. » Established a new partnership with Birdlife Australia to improve the knowledge of shorebirds and seabirds in the Exmouth Gulf marine region of Western Australia. » Supported Murujuga Aboriginal Corporation (MAC)¹ to: <ul style="list-style-type: none"> › Launch a new book titled Living Knowledge: The Plants of Murujuga, which preserves in writing the knowledge of the traditional uses of plants for future generations. › Appoint a Murujuga World Heritage Officer who will coordinate the management of heritage information and cultural knowledge, develop techniques to preserve cultural knowledge and empower Rangers to access, monitor and share knowledge with appropriate cultural sensitivity protocols. » Supported the University of Western Australia, in partnership with MAC¹, to: <ul style="list-style-type: none"> › Commence the Dating Murujuga Dreaming study, managed by their Centre for Rock Art Research and Management, that will implement innovative science to understand the age of the rock art and stone features of Murujuga. › Research the historical and cultural connections between the desert and coastal Aboriginal people in northern WA, from the Western Desert to the coastal Pilbara.
	SDG 8 Decent Work and Economic Growth	<ul style="list-style-type: none"> » Developing the potential of children creates benefits for communities today and in the future. We will continue to partner with non-profit organisations, businesses, schools, academic institutions and government to support education, from a child's early years through to employment. » Through our partnerships, we will provide capacity and capability development opportunities to help create employment pathways for community members.
 BUILD RESILIENCE	SDG II Sustainable Cities and Communities	<ul style="list-style-type: none"> » Engagement with the Roebourne community and local 6718 Yandi for Change initiative matured a new partnership opportunity with One Tree Community Services that supports local early childhood development, employment pathways and training outcomes. » Co-invested with resources sector peers in an initiative to build students' STEM capability through the Digital Technologies Curriculum Initiative to be implemented across Western Australian primary and secondary schools. » Entered into an agreement with the Ngarluma Yindjibarndi Foundation Limited² to improve employment outcomes for pre-release inmates from Roebourne Regional Prison. » Marked 30-years of partnership with Western Australian Youth Orchestras (WAYO) and extended our support by connecting the organisation with West Australian Symphony Orchestra (WASO) to provide unique learning opportunities. » Renewed our partnership with Orange Sky Australia for an additional three years. » Supported the Ngarluma Yindjibarndi Foundation Limited to organise activations in Roebourne that showcase, celebrate and engage with local Aboriginal cultures, heritage and traditions. » Continued support for the Ieramugadu Store Maya (Roebourne General Store) to increase food security in Roebourne and provide emergency food relief for those in need.²

¹ Funded by the Woodside-operated Pluto LNG Joint Venture.

² Funded by the Woodside-operated North West Shelf Project.

A\$20.3 MILLION

Total social contribution spent globally through strategic partnerships, the Woodside Development Fund, our philanthropy program, and the value of time our employees spent volunteering.



Our social contribution data is verified annually by the Business for Societal Impact (formerly London Benchmarking Group). Visit [woodside.com.au/sustainability](https://www.woodside.com.au/sustainability) to view our 2021 Sustainable Development Report and Verification Statement.

A\$15.4 MILLION

Strategic Partnerships

Established across communities where Woodside has both a presence and impact, these seek to build the capacity and capability of local organisations.

A\$800 THOUSAND

Philanthropy

Provided through small grants in our regional locations and donations.



69% of total contribution spend supported programs delivered in Western Australia

A\$1.4 MILLION

Woodside Development Fund

Focused on improving outcomes for children from birth to eight years through sector capability, advocacy and collaboration between multiple organisations to increase impact.

A\$2.7 MILLION

Volunteering

More than 1,700 of our employees participated in a record 14,700 hours of corporate volunteering during 2021.

PARTNERING FOR POSITIVE IMPACT

To coincide with the commencement of our updated Social Contribution Strategy, we also prioritised impact reporting for a number of our social investment partners.

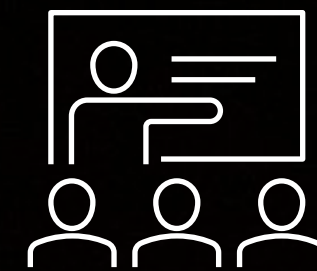
By measuring impact, we are able to better understand how we have positively contributed by supporting our valued partners to improve knowledge, create opportunities and build resilience in the communities where we are active.

The data collected provides detailed insights into the success of programs and identifies areas for improvement and greater long-term focus.

Image: Western Australian Youth Orchestra member at program rehearsal - Perth Concert Hall, Western Australia.

Based on survey responses from our community partner organisations¹, as a result of partnering with Woodside:

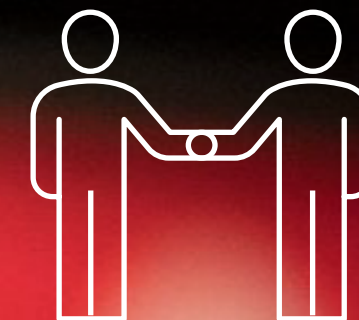
All advised that they had improved their capacity or were able to deliver new programs.



All advised they were able to reach more participants or spend more time with existing participants.

71%

advised that they were able to employ more staff or received additional support from volunteers.



More than half provided Woodside employees with the opportunity to volunteer within their organisations.

More than half of surveyed community partners reported that Woodside's investment had improved their organisation's capacity and capability to deliver programs to Aboriginal and Torres Strait Islander people.



¹Surveyed community partners organisations included those from Woodside's corporate portfolio, accounting for more than a quarter of our total social contribution spend in 2021.



SOCIAL INVESTMENT FOR POSITIVE IMPACT - 2021

IMPROVE KNOWLEDGE

Conservation Volunteers Australia

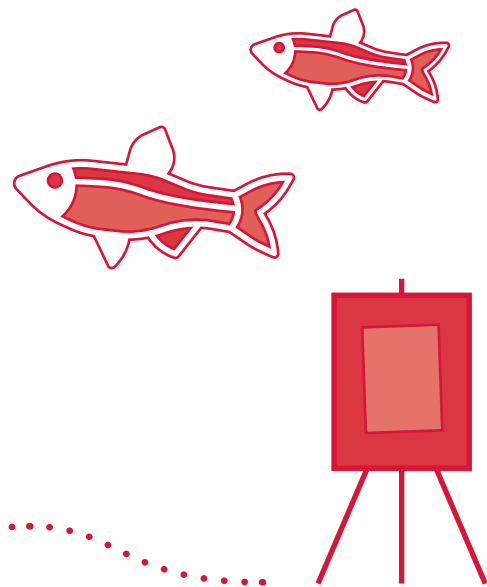
98% of surveyed Woodside employees were motivated to participate in future volunteering opportunities to support the environment following participation in our program with Conservation Volunteers Australia.

95% of surveyed Woodside employees reported an improvement in their knowledge of the local environment.

Environmental Research

15

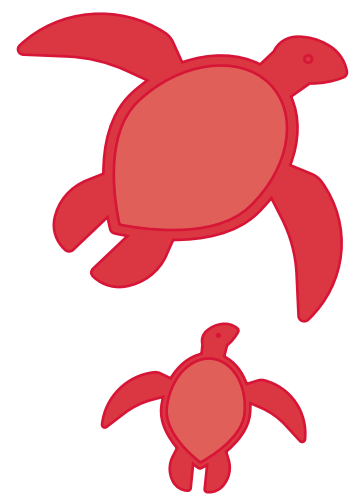
peer-reviewed articles published in leading marine science journals that improve understanding of the offshore environment in North West Australia.



FORM

87% of Roebourne artists' artworks sold during their Ngardamarri showcase exhibition.

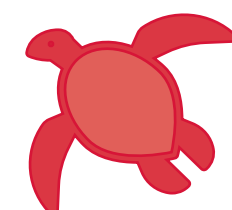
48 Aboriginal artists and 26 early-career artists, creatives and/or participants were engaged in art skills development workshops and clinics.



Department of Biodiversity, Conservation and Attractions

The Ningaloo Turtle Program track monitoring within the Ningaloo Marine Park and World Heritage Area recorded the highest nesting activity by green and loggerhead turtles since the Program began in 2002.

More than 5,800 suspected turtle nests were recorded by 52 volunteers, contributing 5034 hours of monitoring to the Program.



CREATE OPPORTUNITIES

Connecting Community for Kids

86%

of parents reported an increase in their capacity to support their children's learning as a result of their participation in the place-based collective impact initiative, Connecting Community for Kids.

85% of parents have increased confidence in parenting through their participation.



Jawun

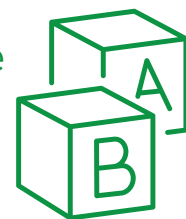
100% of Indigenous Regional Organisations involved in the Jawun program were satisfied with the high calibre of Woodside employee secondees

All Woodside secondees were very satisfied or satisfied with their Jawun secondment experience.



Plan International (Myanmar)

86% of parents who participated in Plan International's Early Childhood Care and Development Program indicated they have increased their capacity to support their children's learning.



MORE THAN 100 PARENTS reported increased confidence in their parenting skills.



Teach for Australia

93%

of program participants (Associates) recognise that they have a role to play in addressing educational inequity

92% report that they are developing the skills and capabilities needed to take effective action towards achieving educational equity.

Karratha Education Initiative

75+

Higher student graduation rates and percentage of students achieving ATAR scores of 75+ since the Karratha Education Initiative began in 2007.

Exmouth Chamber of Commerce

89% of participating businesses report that the Exmouth Business Accelerator Program has helped improve their management, profitability and sustainability.



BUILD RESILIENCE

Volunteering WA

92% of surveyed Woodside employees reported a greater awareness of wider social issues after giving back through community volunteering.

94% of surveyed employees said volunteering increased their sense of wellbeing and happiness.



Orange Sky

25% increase in service reach for those experiencing homelessness across Western Australia.

Australian Red Cross Lifeblood

Woodside staff helped save more than **1,800** lives through plasma and platelet donations.

Cancer 200

Team Woodside has grown from five riders in 2011 to more than **70** riders in 2021.



Surf Life Saving Western Australia

More than 8,000 young Woodside Nippers participated in the surf awareness and beach safety program across 31 clubs in WA.

50% of Woodside Nipper participants were female.

Grants

50 community grants, each valued up to \$5,000, were awarded to grassroots clubs and organisations in Exmouth, Karratha and Roebourne.



Western Australian Youth Orchestras (WAYO) and West Australian Symphony Orchestra (WASO)

100% of WAYO and WASO participants developed new skills or improved existing skills through their involvement in the program.

85% of WAYO program participants developed valuable professional connections.



IMPROVE KNOWLEDGE

“It feels good being an artist. I’ve been making art for a long time now and I feel proud to be sharing my paintings alongside my sisters and artists from my community.”

Wendy Warrie,
Cheeditha Art Group member
and Arts Development
Program participant

FORM

In 2021, the Woodside-operated Pluto LNG Project commenced a partnership with FORM, a not-for-profit arts organisation focused on building a cultural and creative ecology in Western Australia. Informed by initial consultation with artists in Roebourne, the Arts Development Program was then designed and implemented around their current skills development needs.

The Program seeks to increase opportunities for artists to share their culture, generate an income through art, and ensure the longer-term success of artists and centres.

In the first year of the Program, FORM worked with three art groups in the Roebourne area – Yinjaa-Barni Art, Juluwarlu Art Group, and Cheeditha Art Group. Participants developed, diversified, and refined artistic and professional skills through a series of workshops focused on painting, preparing and stretching canvas, websites and photography, artwork pricing, sales strategies, and best-practice art centre processes.

In July, a joint exhibition with the three art groups took place at The Good Shed in Claremont, Perth. Ngardamarri, meaning side-by-side in Yindjibarndi language, showcased the work of artists who had been involved in the Arts Development Program.



The exhibition featured pieces from both senior and emerging artists and resulted in 87% of artworks sold.

In line with this sentiment, Woodside has also been engaging closely with Wangaba Roebourne Art Group, Yinjaa-Barni Art, Juluwarlu Art Group, and Cheeditha Art Group to develop a new concept for a Roebourne-based event in 2022. This community-led event focuses on social and community outcomes and celebrates art and culture in the artists’ own community.

Image: Wendy Warrie from Cheeditha Art Group with her artwork. Photograph by Claire Martin, courtesy of FORM.



IMPROVE KNOWLEDGE

“ This partnership will strengthen Saloum Delta communities’ resilience to climate change by restoring degraded mangroves and supporting the start-up and growth of local microenterprises.”

Ibrahima Thiam,
Executive Director of WIACO



WETLANDS INTERNATIONAL AFRICA WESTERN COAST AND GULF OF GUINEA

2021 marked the commencement of Woodside’s partnership with Senegal-based not-for-profit, Wetlands International Africa Western Coast and Gulf of Guinea (WIACO).

Woodside’s support is contributing to the restoration and conservation of mangroves in the Saloum Delta. Through the partnership, WIACO also aims to build the resilience of the communities that rely upon the mangrove ecosystems for economic and cultural activities.

WIACO consulted with local communities in the Fatick Region of Senegal to discuss the planned restoration activities and sustainable use of biological resources. The organisation will continue to collaborate with community members to develop business practices that integrate environmental considerations and long-term management of natural capital.

WIACO’s commitment to delivering positive impacts through the partnership will see the restoration of degraded mangroves and saline land, leading to income-generating opportunities for local communities.

Image: Saloum Delta in Fatick Region, Senegal.
Photograph courtesy of WIACO.



CREATE OPPORTUNITIES

“Fantastic, engaging lessons that encouraged students to make their own choices, work collaboratively, and problem solve. The buzz in the room each week was great to hear.”

Teacher at participating primary school

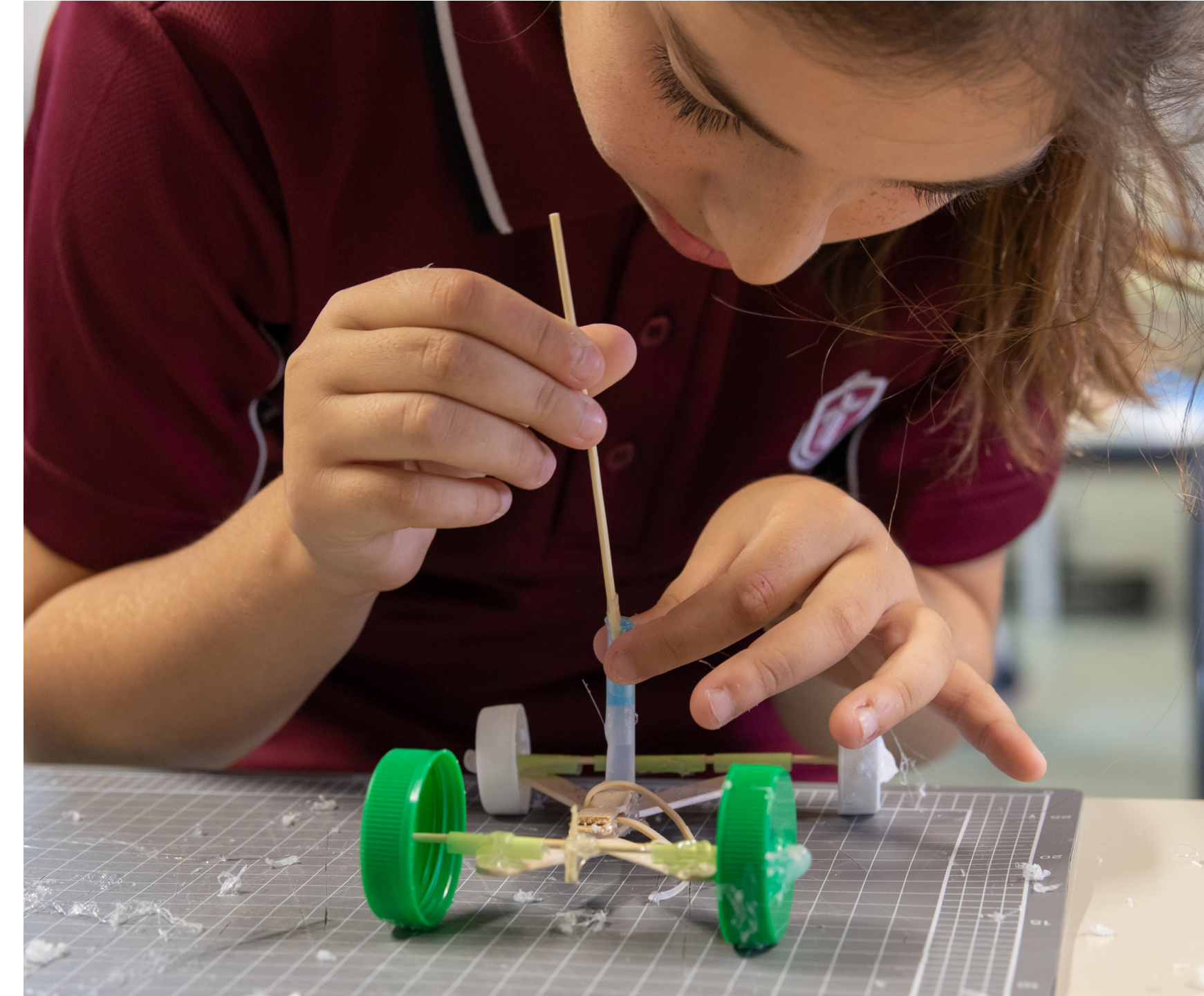
SCITECH

Woodside has partnered with Scitech for more than 20 years to help build the skills and literacy of young Western Australians in the fields of science, technology, engineering, and mathematics (STEM).

Through the partnership, Woodside supports the delivery of STEM Club, an interactive, multi-week workshop for students in Years 4 to 6 that combines hands-on problem solving and creative thinking.

In 2021, among the 92 STEM Club workshops delivered, Scitech was able to offer STEM concepts and experiences for deaf and hard of hearing children through a collaboration with the WA Foundation for Deaf Children. A Scitech presenter, also trained in Australian Sign Language, assisted in facilitating four workshops to provide tailored quality and in-depth STEM experiences.

Scitech is identified as a key contributor in the delivery of the Western Australian Government's STEM skills strategy. By adapting the Woodside supported STEM Club program to cater to the specific needs of diverse groups, Scitech will continue to increase the participation of young people from all backgrounds.



96% of parents with children involved in Scitech's STEM Club have observed an increase in their child's interest in STEM activities.

Image: STEM Club participant - Perth, Western Australia.
Photograph courtesy of Scitech.



CREATE OPPORTUNITIES

“ I love working with the children at Gurlu Gurlu Maya. I’m getting my certificate three in childcare, so I’ll be more qualified. It means I can keep moving up. It can be hard at times, but it’s good to have the support of the WY Program.”

Lilly, Warrgamugardi Yirdiyabura Program participant



NGARLUMA YINDJIBARNDI FOUNDATION LIMITED

The Ngarluma Yindjibarndi Foundation Limited (NYFL) operates in the Pilbara, the centre of Woodside’s operations, and promotes the interests of the Ngarluma and Yindjibarndi people. The Foundation works with organisations to create economic and employment opportunities in the region.

Woodside’s partnership with NYFL through the North West Shelf Project supports the delivery of the Warrgamugardi Yirdiyabura (WY) Program.

The WY Program provides training and education opportunities for people in Roebourne to gain accreditation in an area of their choice and provide a pathway to permanent employment. Since its commencement in 1998, 155 participants have been supported through the Program.

2021 saw 51 participants take part in the Program, including Lilly, who is undertaking a Certificate III in Early Childhood Education and Care with One Tree Community Services in Roebourne.

Top image: Warrgamugardi Yirdiyabura Program participant, Lilly - Roebourne, Western Australia.

Bottom image: Local trainee, Tyrheece, and early childhood room leader, Toshika, with One Tree Community Services childcare member - Roebourne, Western Australia.



BUILD RESILIENCE

“ Learning about school gardens is about strengthening the capacity of our school community to be sustainable. Not only for our students’ learning but also the livelihood of our communities and their families in the future.”

Amandio,
School teacher and program participant

HAMUTUK ITA AJUDA MALU HEALTH

Timor-Leste based non-for-profit organisation, Hamutuk Ita Ajuda Malu (HIAM) Health, helps combat malnutrition in impacted regions by providing education opportunities on nutrition, hygiene, and sustainable agriculture.

Woodside has partnered with HIAM Health through the Sunrise Joint Venture since 2012 to provide continued support for its operations. Since the commencement of the partnership, HIAM Health has worked with more than 600 beneficiaries and reached over 129,000 Timorese people.

HIAM Health’s after school gardening program, an element of the partnership, offers students hands-on agricultural training. The program builds participants’ capabilities in gardening and farming to provide food sources for their schools and implement in their home environment, improving their family’s nutrition and overall health.

The success of the program has also led to teachers and students applying their skills to generate income through harvesting, used to purchase additional nutrition-rich food for the students.

Top image: School garden program participants – Atabae subdistrict, Timor-Leste. Photograph courtesy of HIAM.

Bottom image: HIAM employee at one of the community gardens - Aileu district, Timor-Leste. Photograph courtesy of HIAM.



BUILD RESILIENCE

“ Affordable accommodation is key for our recruitment. We don't want to have to fly people in, we want them to live here and be part of our organisation and who we are.”

Beverley Menezes,
Chief Executive Officer of Karratha
Central Healthcare



CITY OF KARRATHA - SERVICE WORKER ACCOMMODATION SUPPORT

In partnership with the City of Karratha, the Woodside-operated North West Shelf has supported the implementation of a local Service Worker Accommodation (SWA) program. The program provides access to affordable rental accommodation for employees across the health, childcare, retail and service sectors.

The Woodside-operated North West Shelf contributed 15 properties to the SWA pool. The properties are rented at affordable rates, supporting the attraction and retention of employees working in sectors that are crucial to sustaining Karratha as a liveable regional city.

In 2021, local not-for-profit, Karratha Central Healthcare secured one of the SWA program's North West Shelf Project properties. The accommodation is critical to attracting new talent to the organisation and reducing wait times for services including, psychology, speech pathology and occupational therapy.

Image: Karratha Central Healthcare Chief Executive Officer outside a North West Shelf Service Worker Accommodation house - Karratha, Western Australia.



PHILANTHROPY

More than half a million dollars was generated through employee donations and company matched giving through our workplace giving program in 2021.

65 organisations supported through workplace giving

1,278 employees contributed throughout the year

TOP EMPLOYEE SUPPORTED FUNDRAISERS



A\$32,315

Australia's Biggest Morning Tea
Supporting Cancer Council
Western Australia



A\$45,502

The Push-Up Challenge
Supporting Lifeline WA
and Headspace



A\$77,218

Movember
Supporting the
Movember Foundation



A\$64,330

End of year appeal
Supporting The Salvation
Army, Lifeline WA and
International Red Cross





PHILANTHROPY

45% of our employees participated in volunteering activities in 2021.

Over **14,700** hours contributed through team and skills-based volunteering.

VOLUNTEERING

Woodside employees have been enthusiastically helping community organisations through our volunteering program since 2005 when we were one of the first corporate organisations in Australia to offer paid volunteering leave.

In 2021, 1,726 employees volunteered to support 86 organisations and schools in the community. Over the past decade, Woodside employees volunteered their time to a collective value of A\$15.9 million.

The sustained success of our volunteering program is reflected in our longstanding partnerships held with peak volunteering organisations, Volunteering WA and Conservation Volunteers Australia and Jawun.

Woodside was proud to be named Corporate Volunteer of the Year at Volunteering WA's 2021 Awards of Excellence. The award recognised our employees' significant positive impacts and contributions to the Western Australian community through our volunteering program. Woodside also received a Highly Commended award by Workplace Giving Australia in the 2021 Best Workplace Volunteering category.

Top image: Woodside employees volunteering at Food Bank - Perth, Western Australia

Bottom image: Woodside employees volunteering at Dismantle - Perth, Western Australia





PHILANTHROPY

Three Woodside teams competed in and won Conservation Volunteers Australia Corporate Challenge Series in Western Australia throughout 2021. The series engages corporates across the country in sustainability and innovation challenges tackling some of the defining environmental challenges of our time.

83% of surveyed employee participants were inspired to reduce their impact on the environment.

80% of surveyed employees participants want to educate and support their family and friends to reduce their impact on the environment.



CONSERVATION VOLUNTEERS AUSTRALIA - REVIVE PROGRAM

Our partnership with the leading conservation group, Conservation Volunteers Australia (CVA), has been built over the past 15 years.

In 2021, we commenced a new partnership, supporting CVA's Revive program, which aims to improve knowledge of our local environment and strengthen the aquatic habitats in Western Australia.

Our renewed partnership is built on shared values and common goals focused on increasing interest in the environment, increasing accountability towards human impacts on the environment, and improving knowledge within communities through educational initiatives.

In the first year of the new program, Woodside provided 187 volunteers, planted 10,600 native trees, treated 400sqm of habitat for invasive weeds, and removed over 65kg of marine debris.

Images: Woodside employees participating in volunteering with Conservation Volunteers Australia - Perth, Western Australia

**PART OF
A BETTER
FUTURE**

