

Karratha Community Update

June 2026

Proposed Browse to North West Shelf Project continues to progress

The proposed Browse to North West Shelf (NWS) Project (Browse) presents a significant opportunity for Karratha, Western Australia and our regional partners.

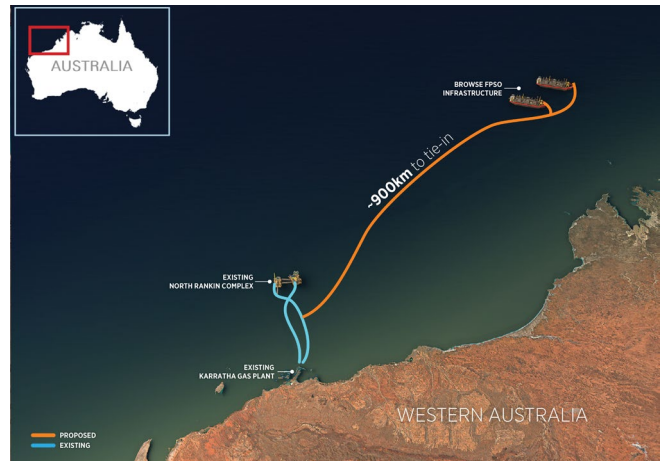
As Australia's biggest undeveloped offshore gas resource, Browse offers long-term energy security to power homes and businesses and could create thousands of jobs and considerable economic benefits and tax revenue.

Importantly, processing Browse natural gas through the existing NWS infrastructure will keep the Karratha Gas Plant (KGP) operating, supporting local jobs in the region and helping Woodside continue its long-standing support for the Karratha and Roebourne communities.

The Browse project will develop gas fields in the Browse Basin, approximately 425 kilometres north of Broome, with gas transported via subsea pipelines to existing NWS infrastructure near Karratha.

A key focus of the project is carbon management. The development concept includes carbon capture and storage (CCS) infrastructure, designed to capture and permanently store a significant portion of carbon dioxide produced from the gas fields. This could reduce the project's emissions and lower the carbon intensity of gas supplied through the NWS.

Minimising environmental impacts is also central to project planning. The project is undergoing environmental assessment processes with both the Western Australian Environmental Protection Authority and the Commonwealth Department of Climate Change, Energy, the Environment and Water. As this assessment has progressed, Woodside has continued to provide updated scientific data and committed to



ⓘ This image is conceptual only, not to scale. Developments are subject to joint venture approvals, regulatory approval and relevant commercial arrangements.

additional measures aimed at minimising environmental impacts to marine life, including pygmy blue whales and green turtles. These changes include design, operational and monitoring controls, including spatial setbacks from sensitive receptors, vessel speed and noise management measures, and enhanced monitoring programs focused on key habitats such as Sandy Islet.

These measures build on more than 30 years of research carried out by Woodside and its joint venture partners at Scott Reef and in surrounding waters.

Browse is currently in the concept definition phase. As planning continues, Woodside has committed to ongoing engagement with regulators, Traditional Owners, local communities in the Pilbara and key stakeholders as the project is progressed.

For more information, view the [Browse fact sheet here](#)

Browse to deliver long-lasting benefits

MORE JOBS
4,760



Direct and indirect full-time equivalent jobs estimated across Australia at peak operations.²

Equivalent to staffing around 80 Western Australian public schools for a year.³

MORE TAX
A\$56.2 BILLION



In estimated taxes, royalties and excise, including ~A\$19.8 billion in Petroleum Resource Rent Tax (PRRT).

Equivalent to funding one new hospital every year for 31 years.⁴

STRONGER ECONOMY
~A\$141 BILLION



Estimated uplift in Gross Domestic Product (GDP).⁵

On average, economic activity in Australia is expected to increase by around A\$2.9 billion each year over the life of the Project, equivalent to more than 5 per cent of Australia's average annual GDP growth.⁶

Headline economic figures are based on Deloitte Access Economics' independent modelling.¹

1. Deloitte Access Economics, Browse to NWS Economic Impact Assessment, May 2026. Report commissioned by Woodside as Operator on behalf of the Browse Joint Venture. 2. Reflects broader supply chain and service industry roles generated across all regions. 3. Department of Education's 2024-25 Annual Report. 4. Women and Babies Hospitals - WA Government (2025) Budget Paper No. 2 Volume 1. 5. 2025 real undiscounted terms. Uplift over the life of the Project. A\$34.2 billion in present value terms. Discounted at seven per cent per annum. 6. Australian Bureau of Statistics, Australian National Accounts 2024-25.

Woodside Energy recognises Aboriginal and Torres Strait Islander peoples as Australia's first people.
We acknowledge the unique connection of the Traditional Custodians to land, waters and the environment where we operate in the City of Karratha.
We extend this recognition and respect to Indigenous Peoples and communities around the world.

Sharing stories from Ngarluma and Yindjibarndi Country



Sharon Warrie, Art Development Camp, Perth 2025. Photo by Marnie Richardson courtesy of FORM

The Woodside-operated Pluto LNG Project's community partnership with FORM is supporting Roebourne (Ieramugadu) artists to share important cultural stories from Ngarluma and Yindjibarndi Country.

As part of the community partnership, last year FORM worked with local artists to present the Where We Come From: The Artists of Ngarluma and Yindjibarndi Country exhibition at FORM Gallery in Perth. The exhibition showcased art that highlights rich cultural histories, lived experiences and strong connections to Country.

The project was shaped to tell these stories in an authentic and meaningful way. The result was a community-led exhibition that celebrated culture while also giving artists hands-on experience in curation, exhibition design and public engagement, helping build skills for future opportunities in arts.

More than 3,300 people visited the exhibition, taking part in guided tours, storytelling sessions, panel discussions and children's workshops, gaining a deeper understanding of local culture and identity.

Woodside is proud to support initiatives like this as part of our broader investment in Roebourne, helping strengthen local capability, culture and community wellbeing.

Woodside's 2026 Academy Awards

Woodside is proud to welcome 25 apprentices and trainees who have graduated from the Woodside Training Academy, marking an important milestone as they transition into roles across our business.

The Woodside Training Academy Graduation and Awards, held at the Red Earth Arts Precinct in Karratha, celebrated the cohort's achievements and recognised the dedication, resilience and perseverance shown throughout their training journey.

Academy Team Lead, Jacqui Meeson said the event was an opportunity to acknowledge both the collective success of the cohort and the outstanding contribution of the individuals.

"The award recipients were recognised not only for their technical capability, but for their commitment to learning, teamwork and living Woodside's values," Jacqui said.

"We are incredibly proud of what this group has achieved and look forward to their continued contribution to our workforce."

The ceremony also acknowledged the important role of mentors, supervisors and trainers who supported the graduates along the way. Pluto Asset Manager, Kate Bardill, thanked those across the business who contributed to developing future talent.

"Our graduates have built strong technical foundations and demonstrated the behaviours that will set them up for success," she said.

Woodside continues to invest in building local capability through its long-standing partnership with Programmed Training Services. Around 80 apprentices and trainees are currently hosted across the Australian business, developing skills and experience that will support the future of our operations in Western Australia.



Woodside's 2026 Training Academy graduates on stage in Karratha, celebrating the successful completion of their apprenticeships and traineeships.

Roebourne school upgrade opens doors for students

Students and families in Ieramugadu (Roebourne) are now enjoying new and upgraded facilities at Roebourne District High School, following completion of the latest stage of the school's redevelopment.

The new facilities include additional classrooms for advisory programs, dedicated pastoral care spaces and preparation areas for teachers, Aboriginal and Islander Education Officers, and student support services, helping create a more supportive and engaging learning environment.

The redevelopment is part of a multi-stage project focused on improving education outcomes in Roebourne, while embedding Indigenous history, culture and language into the design and daily life of the school.

Woodside contributed A\$20 million towards the project through the Resources Community Investment Initiative, as part of our broader, long-term investment in the Roebourne community.

In 2025, Woodside and its Joint Venture participants also invested more than A\$5.7 million in programs supporting education and community wellbeing in Roebourne.

Woodside Chief Executive Officer, Liz Westcott said the opening marked an important milestone.

"For Woodside, supporting communities means working in partnership and investing for the long term," Liz said.

"Education has always been central to that commitment in Roebourne, and these new facilities reflect what can be achieved when community, government and industry work together."



Students from Ieramugadu (Roebourne) at the opening of the new and upgraded facilities alongside WA Premier Roger Cook and Woodside CEO Liz Westcott.

For more than a decade, Woodside has worked alongside the school and educators through the Karratha and Roebourne Education Initiative, supporting literacy and numeracy development, strengthening student engagement and pathways beyond school.

Celebrating creativity and connection at REAF

Woodside and our joint venture partners were pleased to support the City of Karratha's Red Earth Arts Festival (REAF) for another year, with a vibrant 2026 program bringing the community together through arts, culture and creativity.

At The Quarter, our continued support helped deliver a range of free, family-friendly activities, transforming the space into a lively hub of artistic and cultural activity. A highlight was the Harmony & HeART community event, featuring live entertainment, roving performers, markets and activities for all ages.

The 'Silent Observers' installation brought tree disc artworks to life through projection mapping, creating an engaging and immersive visual experience.

Artists from Yinjaa-Barni Art Group painted and displayed artworks on site, welcoming the community to watch the creation of several pieces and engage in conversations. They also hosted a kids' workshop, where young creatives could learn about culture and storytelling through art, creating their own pieces to take home.

The evening program featured roving entertainment, stage performances, music, food trucks and the Karratha & Districts Chamber of Commerce and Industry markets. Woodside employees at the Woodside stall enjoyed the opportunity to engage with the community, share updates on our activities in the north west and hear local feedback in a relaxed and welcoming environment.

Thanks to the City of Karratha for featuring the four-day festival delivered a diverse mix of performances, workshops and experiences across Karratha and surrounding communities, including Roebourne, Dampier, Cossack and Point Samson.

Audiences enjoyed a strong line-up of local, national and Indigenous artists, including the West Australian Opera Gala and theatre performances such as Blacksheep and Shadow Boxing, alongside live music, comedy and cultural storytelling.

REAF continues to grow as a much-loved event in the region, and Woodside and its joint venture partners are proud to support community events that contribute to the vibrancy and liveability of the Pilbara.



Highlights from the Red Earth Arts Festival (REAF) in Karratha, where Woodside employees enjoyed engaging with the community. Photos courtesy of Pilbara Site Photos and Woodside.

Pluto Train 2 project update

As operator of the Pluto LNG facility, Woodside's priority is safe and reliable operations.

We are undertaking work to support the commissioning and start-up of Pluto Train 2 as part of the Scarborough Energy Project. The project is currently on track for first cargo in Q4 2026.

This will result in increased flaring with the potential for some visible dark smoke.

Woodside closely monitors and aims to minimise flaring as part of our normal operations.

To learn more about our commissioning and start-up activities contact us via;

Phone: 1800 634 988

Email: northwestcommunities@woodside.com

