



# Karratha Community Liaison Meeting

---

Friday 20 June 2025



# Disclaimer

## Information

This presentation has been prepared by Woodside Energy Group Ltd (“Woodside”). All information included in this presentation, including any forward-looking statements, reflects Woodside’s views held as at the date of this presentation and, except as required by applicable law, neither Woodside, its related bodies corporate, nor any of their respective officers, directors, employees, advisers or representatives (“Beneficiaries”) intends to, undertakes to, or assumes any obligation to, provide any additional information or update or revise any information or forward-looking statements in this presentation after the date of this presentation, either to make them conform to actual results or as a result of new information, future events, changes in Woodside’s expectations or otherwise.

This presentation may contain industry, market and competitive position data that is based on industry publications and studies conducted by third parties as well as Woodside’s internal estimates and research. While Woodside believes that each of these publications and third party studies is reliable and has been prepared by a reputable source, Woodside has not independently verified the market and industry data obtained from these third party sources and cannot guarantee the accuracy or completeness of such data. Accordingly, undue reliance should not be placed on any of the industry, market and competitive position data contained in this presentation. To the maximum extent permitted by law, neither Woodside, its related bodies corporate, nor any of their respective Beneficiaries, assume any liability (including liability for equitable, statutory or other damages) in connection with, any responsibility for, or make any representation or warranty (express or implied) as to, the fairness, currency, accuracy, adequacy, reliability or completeness of the information or any opinions expressed in this presentation or the reasonableness of any underlying assumptions.

## No offer or advice

This presentation is not intended to and does not constitute, form part of, or contain an offer or invitation to sell to Woodside shareholders (or any other person), or a solicitation of an offer from Woodside shareholders (or any other person), or a solicitation of any vote or approval from Woodside shareholders (or any other person) in any jurisdiction. This presentation has been prepared without reference to the investment objectives, financial and taxation situation or particular needs of any Woodside shareholder or any other person. The information contained in this presentation does not constitute, and should not be taken as, financial product or investment advice. Woodside encourages you to seek independent legal, financial, taxation and other professional advice before making any investment decision.

This presentation shall not be distributed, transmitted, published, reproduced or otherwise made available to any other person, in whole or in part, directly or indirectly, for any purposes whatsoever. In particular, this presentation and the information contained herein may not be taken or transmitted, in, into or from and may not be copied, forwarded, distributed or transmitted in or into any jurisdiction in which such release, publication or distribution would be unlawful. The release, presentation, publication or distribution of this presentation, in whole or in part, in certain jurisdictions may be restricted by law or regulation, and persons into whose possession this presentation comes should inform themselves about, and observe, any such restrictions. Any failure to comply with these restrictions may constitute a violation of the laws of the relevant jurisdiction. Woodside does not accept liability to any person in relation to the distribution or possession of this document in or from any such jurisdiction.

## Forward-looking statements

This presentation contains forward-looking statements with respect to Woodside’s business and operations, market conditions, results of operations and financial condition. All statements, other than statements of historical or present facts, are forward-looking statements and generally may be identified by the use of forward-looking words such as ‘guidance’, ‘foresee’, ‘likely’, ‘potential’, ‘anticipate’, ‘believe’, ‘aim’, ‘aspire’, ‘estimate’, ‘expect’, ‘intend’, ‘may’, ‘target’, ‘plan’, ‘strategy’, ‘forecast’, ‘outlook’, ‘project’, ‘schedule’, ‘will’, ‘should’, ‘seek’ and other similar words or expressions. Similarly, statements that describe the objectives, plans, goals or expectations of Woodside are forward-looking statements. Forward-looking statements in this presentation are not guidance, forecasts, guarantees or predictions of future events or performance, but are in the nature of future expectations that are based on management’s current expectations and assumptions. Those statements and any assumptions on which they are based are subject to change without notice and are subject to inherent known and unknown risks, uncertainties, assumptions and other factors, many of which are beyond the control of Woodside, its related bodies corporate and their respective Beneficiaries. If any of the assumptions on which a forward-looking statement is based were to change or be found to be incorrect, this would likely cause outcomes to differ from the statements made in this presentation.

Important factors that could cause actual results to differ materially from those in the forward-looking statements include, but are not limited to, fluctuations in commodity prices, actual demand for Woodside products, currency fluctuations, geotechnical factors, drilling and production results, gas commercialisation, development progress, operating results, engineering estimates, reserve and resource estimates, loss of market, industry competition, environmental risks, climate related risks, physical risks, legislative, fiscal and regulatory developments, changes in accounting standards, economic and financial markets conditions in various countries and regions, political risks, the actions of third parties, project delay or advancement, regulatory approvals, the impact of armed conflict and political instability (such as the ongoing conflict in Ukraine) on economic activity and oil and gas supply and demand, cost estimates, the effect of future regulatory or legislative actions on Woodside or the industries in which it operates, including potential changes to tax laws, the impact of general economic conditions, inflationary conditions, prevailing exchange rates and interest rates and conditions in financial markets, and risks associated with acquisitions, mergers and joint ventures, including difficulties integrating businesses, uncertainty associated with financial projections, restructuring, increased costs and adverse tax consequences, and uncertainties and liabilities associated with acquired and divested properties and businesses.

# Disclaimer

---

## **Forward-looking statements (continued)**

A more detailed summary of the key risks relating to Woodside and its business can be found in the “Risk” section of Woodside’s most recent Annual Report released to the Australian Securities Exchange and in Woodside’s most recent Annual Report on Form 20-F filed with the United States Securities and Exchange Commission and available on the Woodside website at <https://www.woodside.com/investors/reports-investor-briefings>. You should review and have regard to these risks when considering the information contained in this presentation.

Investors are strongly cautioned not to place undue reliance on any forward-looking statements. Actual results or performance may vary materially from those expressed in, or implied by, any forward-looking statements.

## **Climate strategy and emissions data**

All greenhouse gas emissions data in this presentation are estimates, due to the inherent uncertainty and limitations in measuring or quantifying greenhouse gas emissions, and our methodologies for measuring or quantifying greenhouse gas emissions may evolve as best practices continue to develop and data quality and quantity continue to improve.

Woodside “greenhouse gas” or “emissions” information reported are net equity Scope 1 greenhouse gas emissions, Scope 2 greenhouse gas emissions, and/or Scope 3 greenhouse gas emissions, unless otherwise stated.

For more information on Woodside’s climate strategy and performance, including further details regarding Woodside’s targets, aspirations and goals and the underlying methodology, judgements, assumptions and contingencies, refer to Woodside’s Climate Transition Action Plan and 2023 Progress Report (CTAP) available on the Woodside website at <https://www.woodside.com/sustainability/climate-change>.

The footnotes to this presentation may provide clarification regarding the use of terms such as “lower carbon” under Woodside’s climate strategy. A full glossary of terms used in connection with Woodside’s climate strategy is contained in the CTAP.

## **Other important information**

All references to dollars, cents or \$ in this presentation are to US currency, unless otherwise stated. References to “Woodside” may be references to Woodside Energy Group Ltd and/or its applicable subsidiaries (as the context requires). This presentation does not include any express or implied prices at which Woodside will buy or sell financial products. A securities rating is not a recommendation to buy, sell or hold securities and may be subject to revision or withdrawal at any time.



# Agenda

---

Item	Attendees
Acknowledgement of Country	Murujuga Aboriginal Corporation
Introductions – new members	Department of Education
Operations Update	Department of Communities
Projects	Development WA
Decommissioning	Dampier Community Association
SEIA	Karratha Central Healthcare
Community Contributions	Karratha & Districts Chamber of Commerce & Industry
Environment plans	
Around the table	Community Member x 1



# Acknowledgement of Country

---



# Introductions and welcome

---



# Reminders

---

- Respect the opinions of all Karratha CLG members and treat members with courtesy and respect.
- Declare any perceived or actual conflicts of interest or feel free to step out of the room for certain agenda items.
- Disseminate project information, status and direction within your community, organisation or network, and convey feedback to CLG meetings.



# Operations Update

---

# Operations update

## NWS Project Extension

- In December 2024, the State Government approved the NWS Project Extension proposal, with conditions that include management of cultural heritage, emissions, air quality and marine environment.
- This approval does not involve expanding our onshore infrastructure or footprint. The NWS Project Extension supports the ongoing operation of the NWS Project.
- On 28 May 2025, the Federal Government provided its proposed environmental approval for the NWS Project Extension.
- As part of the proposed approval, the Federal Government has included a number of proposed conditions which relate to matters including cultural heritage management and air quality.
- We are working through the approval process with the Federal Government and reviewing the proposed conditions and look forward to having this matter resolved soon.
- Federal approval will provide required certainty for the long-term operation of the NWS Project, which can continue to support local and global energy security, as well as regional development opportunities in Karratha.



# Operations update

## World Heritage Listing and Murujuga Rock Art Management Plan (MRAMP)

- Woodside acknowledges that ICOMOS has made a recommendation in respect of the World Heritage Listing nomination for Murujuga, which was issued prior to the release of the latest MRAMP report. The MRAMP report addresses a number of the concerns raised by ICOMOS.
- The ICOMOS recommendation is not the final decision, this rests with the World Heritage Committee.
- Woodside will continue to support the leadership of Traditional Custodians and their representative institutions, including the Murujuga Aboriginal Corporation (MAC), who hold cultural authority, and work with the Commonwealth and State Governments as they prepare their responses to the recommendation.
- The internationally peer-reviewed, best-practice science conducted by the MRAMP, led by MAC and Western Australian Department of Water and Environmental Regulation, confirms that with the right controls and collaboration, co-existence of industry and cultural heritage is not only possible but already happening.
- The most recent MRAMP findings have not been reflected in ICOMOS' report.



# NWS Project update

## Planned maintenance

- Our first turnaround activity for 2025 is now complete.
- Next turnaround expected end of August.

## Apprenticeships and Traineeships

- 22 apprentices and trainees joined the Woodside Training Academy in Karratha this year.
- 13 of the training participants are female and 14 are Indigenous.
- Applications for the 2026 intake close on 22 June.

### Apprenticeships:

- Mechanical Fitter
- Electrical Instrumentation
- Communications

### Traineeships:

- Pre-Pathways
- Laboratory Technician





# Projects Update

---

# Pluto Train 2 - Pipe Blowing Activities to Commence



- Our contractor, Bechtel, will be undertaking pipeline blowing activities from May 2025 until early 2026 as part of the pre-commissioning process of the new LNG Train.
- This will result in short (1-5 seconds) bursts of loud noise as high velocity air is expelled from the piping system. While the activity is planned, subject to wind conditions and the air pressure required to clear the individual pipe, the noise may be heard by adjacent Burrup facilities and communities.
- There is no danger or action needed as a result of these noises.
- If you would like further information, please contact our execution contractor, Bechtel - [plutotrain2@bechtel.com](mailto:plutotrain2@bechtel.com)



# Decommissioning Update

---

# Decommissioning Delivery Portfolio – Projects Australia



## ENFIELD (COMPLETE)

1 RTM, 18 Wells  
42 km of Flowlines and Umbilicals  
9,000 Te of Infrastructures



## ANGEL (PLANNING)

1 Steel Jacket Platform, 3 Wells  
63 km of Pipeline, Flowlines and Umbilicals  
28,000 Te of Infrastructures



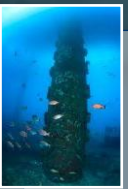
## STYBARROW (EXECUTE)

1 DTM, 10 Wells  
80 km of Flowlines and Umbilicals  
9,800 Te of Infrastructures



## NGUJIMA YIN (PLANNING)

1 FPSO (with STB), 28 Wells  
150 km of Flowlines and Umbilicals  
320,000 Te of Infrastructures



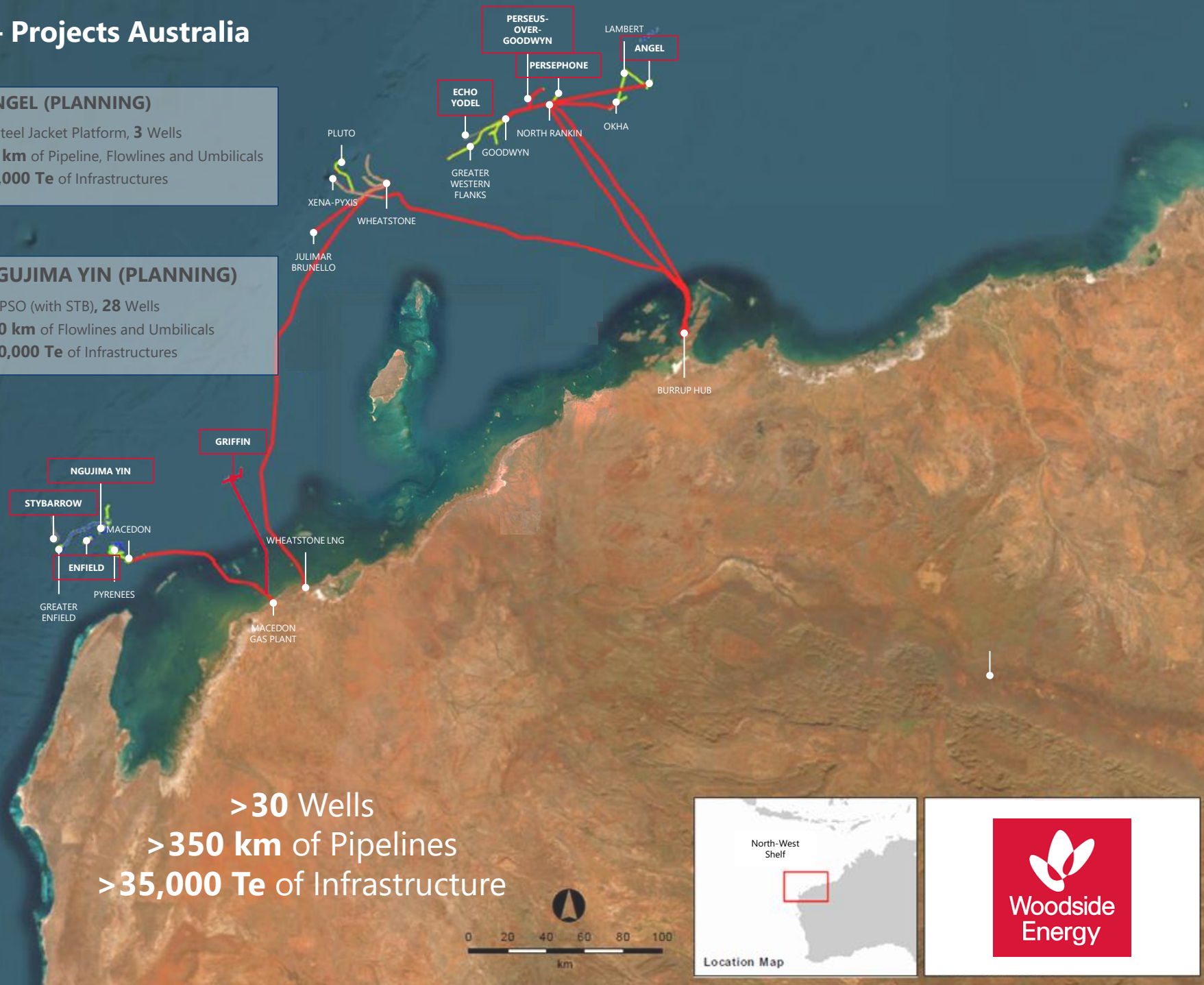
## GRIFFIN (EXECUTE)

1 RTM  
127 km of Flowlines and Umbilicals  
10,000 Te of Infrastructures

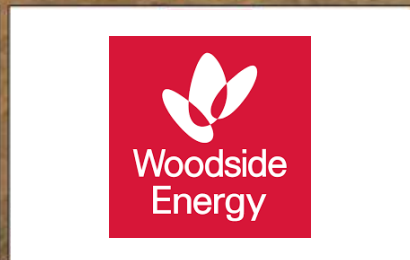


## ECHO YODEL (EXECUTE)

46 km of Flowlines and Umbilicals  
2,300 Te of Infrastructures



>30 Wells  
>350 km of Pipelines  
>35,000 Te of Infrastructure



# Integrated Wellhead Removal Campaign



## NWS GAS

25 Wellheads



## NWS ECHO YODEL

2 Wellheads



## NWS OIL

5 Wellheads



## JULIMAR BRUNELLO

6 Wellheads



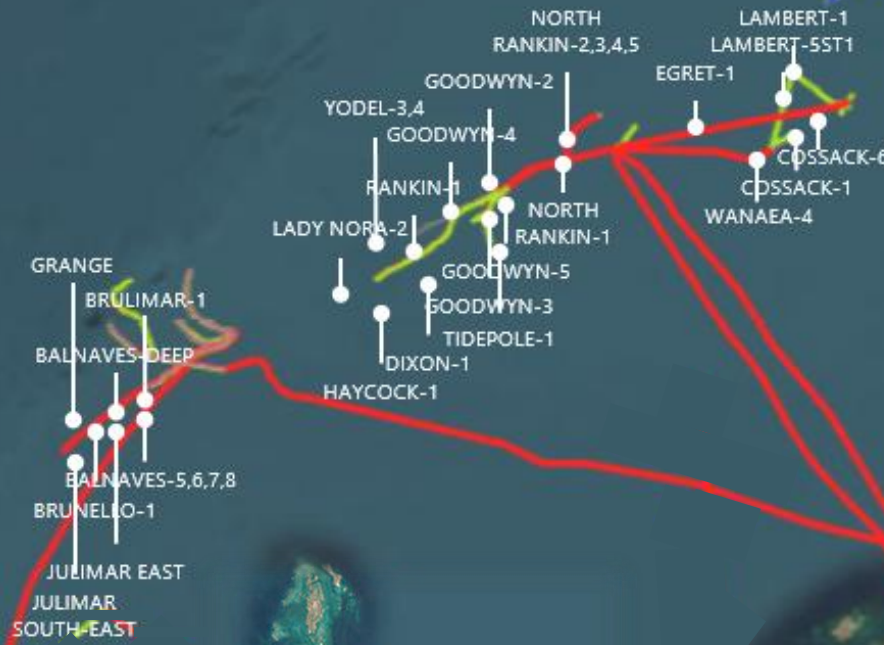
## BALNAVES

4 Wellheads



## EGRET

1 Wellhead



**45+**  
Wellheads

**6+**  
Different  
Joint Ventures



# Decommissioning Waste Management

## 1 KARRATHA: ENFIELD, BALNAVES, & STYBARROW WELLS, AND GRIFFIN, STYBARROW, ENFIELD, & ECHO YODEL SUBSEA



Toll Dampier Supply Base



Cleanaway Industrial Waste



Karratha Scrap Yard

## 2 ONSLOW: GRIFFIN, STYBARROW, & ENFIELD SUBSEA



Port of Ashburton



Onslow Laydown Yard

## 3 HENDERSON: ENFIELD & GRIFFIN RISER TURRET MOORINGS (RTMs)



Australian Maritime Complex



**95%**  
Target Recycling  
Rate by Weight

\*Waste Management Pathways for Other Scopes are Still Being Defined



# Socio-Economic Impact Assessment

---

# Stakeholders consulted

## Karratha

### In person

- Pilbara Bakehouse
- RDA Pilbara ●
- KDCCI ●
- Stayover Kingfisher Camp
- Stars Foundation ●
- Lo's Café
- Department of Education ●
- Karratha Senior High School
- Karratha Primary School
- Pilbara Universities Centre
- Yurra
- Cherratta Lodge
- North West Alliance ●
- Karratha WA Centre for Rural Health
- Karratha State Emergency Service ●
- Anglicare
- Dampier Community Association
- Karratha Eyecare
- Compass / Bay Villages
- Clontarf Foundation ●
- Karratha Medical Centre ●
- Murujuga Aboriginal Corporation ●
- City of Karratha Council ●

### Online

- HAKC
- Department of Communities ●
- Pilbara Development Commission ●
- Empowering People in Communities (EPIC)
- Ganaji
- Karratha Basketball Association
- Salvation Army ●
- Volunteering WA
- Wrapped Creations
- KBSS

## Roebourne

### In person

- Yaandina Community Services
- Roebourne Police
- One Tree
- Ngarliyarndu Bindirri Aboriginal Corporation (NBAC) ●
- Ngarluma Yindjibarndi Foundation Ltd (NYFL) ●
- Ashburton Aboriginal Corporation
- Community Lunch
- Warridahs of the Ngurra
- Roebourne PCYC
- Roebourne District High School

### Online

- Cheeditha Art Group
- Murujuga Aboriginal Corporation (MAC) ●
- Yinjaa Barni Art

## Summary

- Total Stakeholder Meetings – 46
- Total Attendees – 45 Karratha and 51 Roebourne (including community lunch)
- Stakeholders relevant to both communities ●

# Summary of consultation sentiment – Karratha and Roebourne

Theme
<b>Economy, employment and business</b>
<b>Education and training</b>
<b>Housing and accommodation</b>
<b>Social infrastructure and services</b>
<b>Community health, wellbeing and culture</b>
<b>Aboriginal community and culture</b>

# Consultation outcomes – Growth & Decline Scenarios

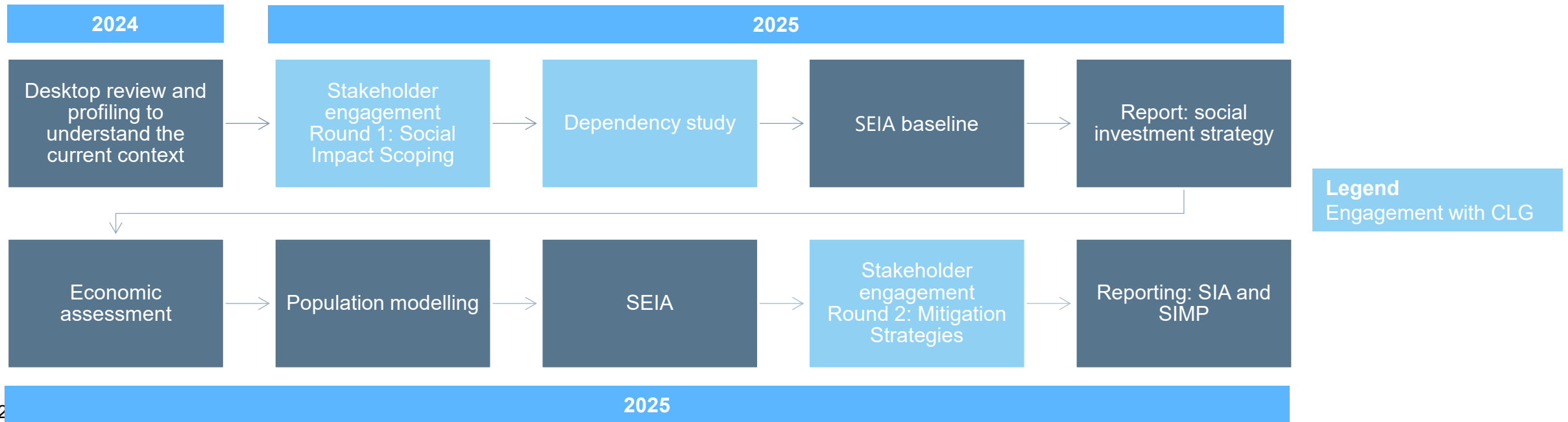
Theme	Growth	Decline
<b>Economy, employment and business</b>	<p>Increased local employment opportunities including Indigenous employment and pathway creation.</p> <p>Ongoing local procurement and cumulatively increasing spend at Karratha and Roebourne businesses.</p> <p>Growth of local and regional economy and maintenance of community vibrancy due to residential workforces.</p>	<p>Reduction in employment opportunities, including reduction in local procurement and spend. General reduction in business traffic across the communities with a declining workforce, impacting the local economy.</p> <p>Increasing pressures on small businesses that overly rely on Woodside.</p> <p>Decreasing training opportunities and traineeships on offer, potentially increasing population decline., in addition to more of a potential focus on FIFO roles to satisfy short term needs, resulting in decline in community vibrancy.</p> <p>Small businesses may potentially be able to compete to engage highly skilled workforce that are no longer drawn to high wages from resources sector.</p>
<b>Education and training</b>	<p>Continued improvement in education quality due to available funding and increasing expectations of community.</p> <p>Further pressures on school system and class size in growth scenario.</p> <p>Training and employment pathways for young people continue to grow.</p>	<p>Reduced funding for education and training opportunities within the region, encouraging population movement and a decline in school infrastructure and education quality.</p> <p>Less pressure on school infrastructure and class sizes, encouraging more suitable education outcomes.</p>
<b>Housing and accommodation</b>	<p>Pressure on affordability and availability of housing will increase.</p> <p>Increasing challenge on low and moderate income families, local businesses and services.</p>	<p>More affordable housing with less pressure on housing.</p> <p>Impact to small businesses that supply housing market.</p>
<b>Social infrastructure and services</b>	<p>Access to some key social services remains a challenge due to staffing and resourcing challenges with workers drawn to well-paid resource roles.</p> <p>Increasing pressures on social infrastructure with increasing population growth and cost of living pressures.</p> <p>Further social investment to address community challenges and gaps available in growth scenario.</p>	<p>Reduced funding for social infrastructure and services in the community which contribute to region's liveability.</p> <p>Less pressure on key social services such as childcare if decline scenario results in population decline.</p>
<b>Community health, wellbeing and culture</b>	<p>Community connection, cohesion and sense of community was overall recognised as strong, long lasting residential roles will see this grow.</p> <p>Further social investment to address community challenges and gaps.</p>	<p>Reduced social investment has wide community impact, including for not-for-profits and community led organisations.</p> <p>Changes in community composition and demographics with population decline and potentially key members of the community leave, including from possibly key roles such as medical professionals.</p>
<b>Aboriginal community and culture</b>	<p>Further social investment to address community challenges and recognised gaps in community, potentially available in growth scenario.</p>	<p>Decline in opportunities, including social investment potentially having impact on wider Aboriginal community.</p>

# Next Steps – Socio-Economic Impact Assessment

Woodside has commissioned GHD to prepare a SEIA for Karratha and Roebourne; assessing three business scenarios:

Scenario 1	Scenario 2	Scenario 3
Existing activities in Karratha	Decline scenario	Growth scenario

## PROCESS





# Community contribution

---

# Community Contribution

## Local contract awards

Contracts have recently been awarded for the construction of an additional 30 houses in Karratha:

- 20 by Thomas Building
  - 10 by Traditional Owner business Yurra Building.
- The contract awards take to 50 the number of new homes built to support Woodside workforce needs since 2024.

## Roebourne Pathways Program

In March 2025, we renewed our partnership with One Tree Community Services – Gurlu Gurlu Maya Childrens Centre for four years, allowing us to continue building on the positive outcomes since 2021.





# Environment Plans

---

# Woodside Consultation

## Woodside consults relevant persons in the course of preparing our Environment Plans (EPs) to:

- Notify about the proposed activity.
- Seek input to assist Woodside to confirm current measures or identify additional measures, if any, that could be taken to lessen or avoid potential adverse impacts and risks of the proposed activity on the environment.

## Find out more or provide input?

You may be a relevant person if you or your organisation has functions, interests, or activities that may be affected by an offshore petroleum activity proposed under an EP. Woodside identifies relevant persons or they can self-identify.

For Commonwealth EPs, Woodside's assessment of relevant persons and consultation on EPs is based on the Environment that May Be Affected (EMBA). The EMBA is the largest spatial extent where unplanned events, no matter how unlikely, could potentially have an environmental impact.

For State EPs, Woodside's assessment of relevant authorities and other relevant interested persons or organisations is based on the Operational Area.



Scan the QR code or visit [woodside.com/consultation-activities](https://www.woodside.com/consultation-activities) to access our consultation information.

The screenshot shows a newsletter page titled "Let's Talk" with the subtitle "Our Plans, Your Say" and "Edition 5 | March 2025". The Woodside Energy logo is in the top left. The main content includes a photograph of a rocky coastline with a red rock formation. Below the photo is the heading "The rundown" and a section titled "Cultural Connections: Woodside's Commitment to Heritage Management". The text discusses heritage audits and the involvement of Traditional Custodians. A red sidebar on the right contains the heading "A soaring community experience" and text about a community event at Pearson's Cove. At the bottom right of the sidebar is a photograph of people on a beach. The footer includes a link to subscribe for future editions and social media icons.

# NWS & Pluto Trunkline Operations (State Waters) EPs

## Environment plan consultation

### Overview

- Five-year revision of the EPs. The State waters component of the NWS and Pluto Trunklines Operations EPs is in the Dampier Archipelago from the Mean Low Water Mark (MLWM) to the boundary between State and Commonwealth waters.
  - NWS Trunklines (Pipeline Licence TPL/15 and 16): ~11 km from Dampier at their shoreline crossings and ~17 km from Karratha at their shoreline crossings.
  - Pluto Trunkline (Pipeline License TPL/19): ~15 km north, northwest of Karratha at the shoreline crossing and ~8 km northeast of Dampier at the shoreline crossing.

### Proposed activities

- Routine operation of the trunklines and the Operational Area includes 500 m on either side of the infrastructure from the MLWM to State waters boundary (~3 nm offshore).
- Routine inspection, monitoring, maintenance and repair (IMMR) activities.
- Support vessel activities within the Operational Area.

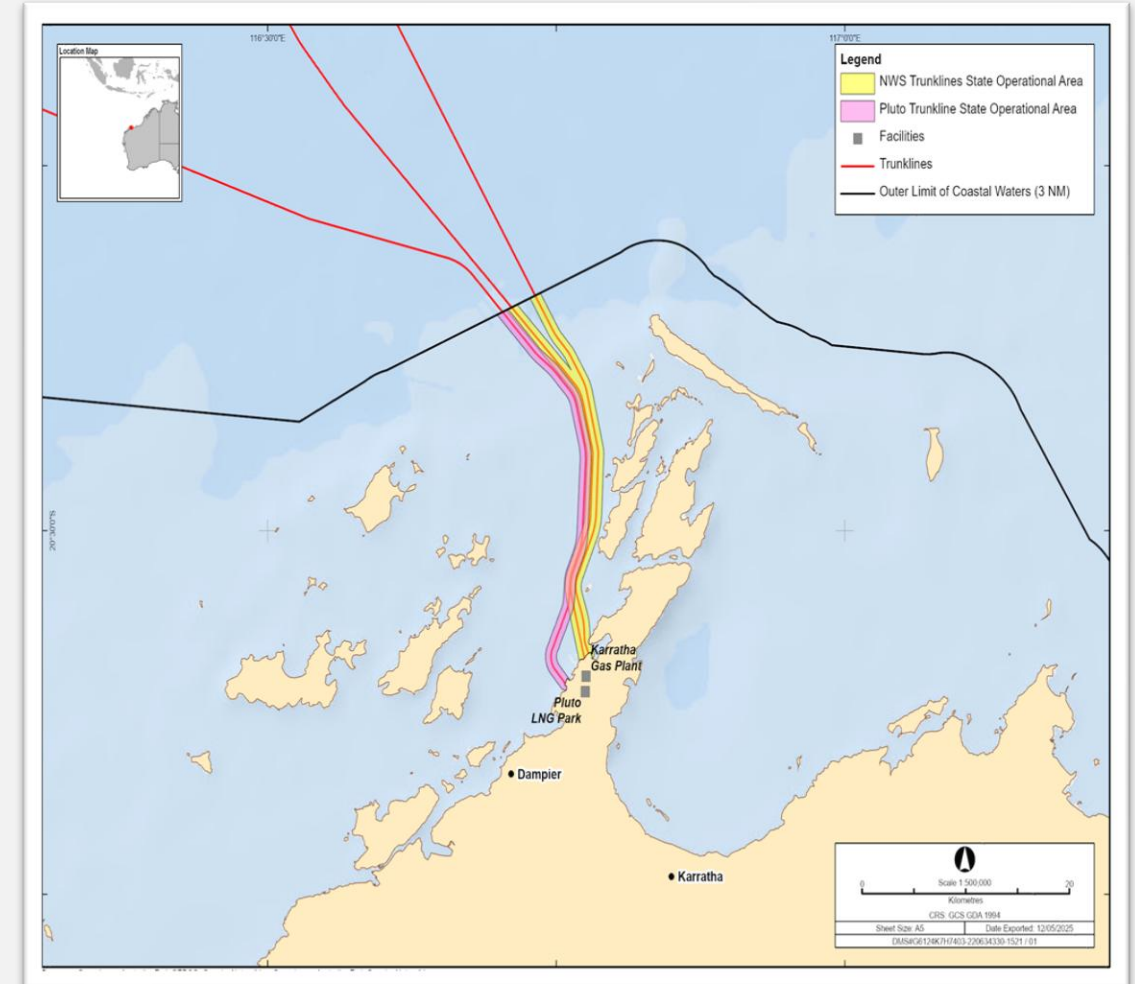
### We want to hear from you

We are seeking input from relevant persons whose functions, interests or activities may be impacted.

### Find out more or provide input

Learn more about the NWS and Pluto Trunklines Operations (State Waters) EPs at [woodside.com/what-we-do/consultation-activities](https://www.woodside.com/what-we-do/consultation-activities).

If you would like to comment on the proposed activities, or would like additional information, please contact Woodside before **15 July 2025** via: [consultation@feedback.woodside.com](mailto:consultation@feedback.woodside.com) | **Toll free: 1800 442 977**



# Overview: Karratha

## Environment Plan Consultation

Consultation Information Sheets are available on Woodside's website.

You can also subscribe to receive updates on our consultation through our [website](#).

### Consultation Underway

Environment Plan	Activity Type	Description	Location	Consultation Closes
NWS Trunklines Operations (State)	Operations	Five-year revision of the State Operations EP.	~ 11 km from Dampier ~ 17 km from Karratha	<b>15 July 2025</b>
Pluto Trunkline Operations (State)	Operations	Five-year revision of the State Operations EP.	~ 8 km northeast of Dampier ~ 15 km north-northwest of Karratha	<b>15 July 2025</b>

### Upcoming Consultation

Environment Plan	Activity Type	Description	Location	Consultation Dates
GWF-4 Drilling and Subsea Installation	Drilling	Drilling and completions as well as subsea installation and pre-commissioning.	~140 km north-west of the town of Karratha.	<b>July – August 2025</b>
Julimar/Brunello P&A	Decommissioning	Decommissioning of four wells in the Julimar / Brunello Field.	~ 160 km north-west of the town of Dampier.	<b>August – September 2025</b>
CK4 Well Intervention	Drilling	Light well intervention of a well.	~ 125 km north-west of the town of Dampier.	<b>September – October 2025</b>

# PREVIOUS CONSULTATION

Consultation Information Sheets are available on Woodside's website. You can also subscribe to receive updates on our consultation through our [website](#).



## Decommissioning

NWS Phase 1 Well Plug and Abandonment and TPA03 Well Intervention

Angel Subsea Infrastructure Removal



## Operations

North Rankin Complex Operations

Julimar Operations

Pyrenees Facility Operations

Pluto Operations

Okha FPSO Facility Operations



## Other

Goodwyn Alpha GPGT Surveys



Scan the QR code or visit [woodside.com/consultation-activities](https://www.woodside.com/consultation-activities) to access our consultation information.

# Environment plans

## Find out more or provide input

If you are an individual, organisation or community group and believe your functions, interests or activities may be impacted by the activities under these Environment Plans, we would like to hear from you.

Subscribe to receive updates including Consultation Information Sheets on new Environment Plans and the latest *Let's Talk* newsletter.

### Woodside Feedback:

Email: [consultation@feedback.woodside.com](mailto:consultation@feedback.woodside.com)

Phone: 1800 442 977



Scan the QR code or visit  
[woodside.com/consultation-activities](https://woodside.com/consultation-activities)  
to access our consultation information.



# Round Table Discussion

---

# Feedback or concerns?

**If a community member would like to provide feedback, or has a concern or grievance – contact us:**

Woodside Community Line: 1800 634 988

Email: [northwestcommunities@woodside.com](mailto:northwestcommunities@woodside.com)



# 2025 meeting schedule – proposed

Q3	11 August Community Sundowner – all CLG members welcome
Q3	Thursday 25 September 2025
Q4	Friday 28 November 2025 – afternoon sundowner