



Karratha Community Liaison Meeting

Friday 28 November 2025



Disclaimer

Information

This presentation has been prepared by Woodside Energy Group Ltd (“Woodside”). All information included in this presentation, including any forward-looking statements, reflects Woodside’s views held as at the date of this presentation and, except as required by applicable law, neither Woodside, its related bodies corporate, nor any of their respective officers, directors, employees, advisers or representatives (“Beneficiaries”) intends to, undertakes to, or assumes any obligation to, provide any additional information or update or revise any information or forward-looking statements in this presentation after the date of this presentation, either to make them conform to actual results or as a result of new information, future events, changes in Woodside’s expectations or otherwise.

This presentation may contain industry, market and competitive position data that is based on industry publications and studies conducted by third parties as well as Woodside’s internal estimates and research. While Woodside believes that each of these publications and third party studies is reliable and has been prepared by a reputable source, Woodside has not independently verified the market and industry data obtained from these third party sources and cannot guarantee the accuracy or completeness of such data. Accordingly, undue reliance should not be placed on any of the industry, market and competitive position data contained in this presentation. To the maximum extent permitted by law, neither Woodside, its related bodies corporate, nor any of their respective Beneficiaries, assume any liability (including liability for equitable, statutory or other damages) in connection with, any responsibility for, or make any representation or warranty (express or implied) as to, the fairness, currency, accuracy, adequacy, reliability or completeness of the information or any opinions expressed in this presentation or the reasonableness of any underlying assumptions.

No offer or advice

This presentation is not intended to and does not constitute, form part of, or contain an offer or invitation to sell to Woodside shareholders (or any other person), or a solicitation of an offer from Woodside shareholders (or any other person), or a solicitation of any vote or approval from Woodside shareholders (or any other person) in any jurisdiction. This presentation has been prepared without reference to the investment objectives, financial and taxation situation or particular needs of any Woodside shareholder or any other person. The information contained in this presentation does not constitute, and should not be taken as, financial product or investment advice. Woodside encourages you to seek independent legal, financial, taxation and other professional advice before making any investment decision.

This presentation shall not be distributed, transmitted, published, reproduced or otherwise made available to any other person, in whole or in part, directly or indirectly, for any purposes whatsoever. In particular, this presentation and the information contained herein may not be taken or transmitted, in, into or from and may not be copied, forwarded, distributed or transmitted in or into any jurisdiction in which such release, publication or distribution would be unlawful. The release, presentation, publication or distribution of this presentation, in whole or in part, in certain jurisdictions may be restricted by law or regulation, and persons into whose possession this presentation comes should inform themselves about, and observe, any such restrictions. Any failure to comply with these restrictions may constitute a violation of the laws of the relevant jurisdiction. Woodside does not accept liability to any person in relation to the distribution or possession of this document in or from any such jurisdiction.

Forward-looking statements

This presentation contains forward-looking statements with respect to Woodside’s business and operations, market conditions, results of operations and financial condition. All statements, other than statements of historical or present facts, are forward-looking statements and generally may be identified by the use of forward-looking words such as ‘guidance’, ‘foresee’, ‘likely’, ‘potential’, ‘anticipate’, ‘believe’, ‘aim’, ‘aspire’, ‘estimate’, ‘expect’, ‘intend’, ‘may’, ‘target’, ‘plan’, ‘strategy’, ‘forecast’, ‘outlook’, ‘project’, ‘schedule’, ‘will’, ‘should’, ‘seek’ and other similar words or expressions. Similarly, statements that describe the objectives, plans, goals or expectations of Woodside are forward-looking statements. Forward-looking statements in this presentation are not guidance, forecasts, guarantees or predictions of future events or performance, but are in the nature of future expectations that are based on management’s current expectations and assumptions. Those statements and any assumptions on which they are based are subject to change without notice and are subject to inherent known and unknown risks, uncertainties, assumptions and other factors, many of which are beyond the control of Woodside, its related bodies corporate and their respective Beneficiaries. If any of the assumptions on which a forward-looking statement is based were to change or be found to be incorrect, this would likely cause outcomes to differ from the statements made in this presentation.

Important factors that could cause actual results to differ materially from those in the forward-looking statements include, but are not limited to, fluctuations in commodity prices, actual demand for Woodside products, currency fluctuations, geotechnical factors, drilling and production results, gas commercialisation, development progress, operating results, engineering estimates, reserve and resource estimates, loss of market, industry competition, environmental risks, climate related risks, physical risks, legislative, fiscal and regulatory developments, changes in accounting standards, economic and financial markets conditions in various countries and regions, political risks, the actions of third parties, project delay or advancement, regulatory approvals, the impact of armed conflict and political instability (such as the ongoing conflict in Ukraine) on economic activity and oil and gas supply and demand, cost estimates, the effect of future regulatory or legislative actions on Woodside or the industries in which it operates, including potential changes to tax laws, the impact of general economic conditions, inflationary conditions, prevailing exchange rates and interest rates and conditions in financial markets, and risks associated with acquisitions, mergers and joint ventures, including difficulties integrating businesses, uncertainty associated with financial projections, restructuring, increased costs and adverse tax consequences, and uncertainties and liabilities associated with acquired and divested properties and businesses.

Disclaimer

Forward-looking statements (continued)

A more detailed summary of the key risks relating to Woodside and its business can be found in the “Risk” section of Woodside’s most recent Annual Report released to the Australian Securities Exchange and in Woodside’s most recent Annual Report on Form 20-F filed with the United States Securities and Exchange Commission and available on the Woodside website at <https://www.woodside.com/investors/reports-investor-briefings>. You should review and have regard to these risks when considering the information contained in this presentation.

Investors are strongly cautioned not to place undue reliance on any forward-looking statements. Actual results or performance may vary materially from those expressed in, or implied by, any forward-looking statements.

Climate strategy and emissions data

All greenhouse gas emissions data in this presentation are estimates, due to the inherent uncertainty and limitations in measuring or quantifying greenhouse gas emissions, and our methodologies for measuring or quantifying greenhouse gas emissions may evolve as best practices continue to develop and data quality and quantity continue to improve.

Woodside “greenhouse gas” or “emissions” information reported are net equity Scope 1 greenhouse gas emissions, Scope 2 greenhouse gas emissions, and/or Scope 3 greenhouse gas emissions, unless otherwise stated.

For more information on Woodside’s climate strategy and performance, including further details regarding Woodside’s targets, aspirations and goals and the underlying methodology, judgements, assumptions and contingencies, refer to Woodside’s Climate Transition Action Plan and 2023 Progress Report (CTAP) available on the Woodside website at <https://www.woodside.com/sustainability/climate-change>.

The footnotes to this presentation may provide clarification regarding the use of terms such as “lower carbon” under Woodside’s climate strategy. A full glossary of terms used in connection with Woodside’s climate strategy is contained in the CTAP.

Other important information

All references to dollars, cents or \$ in this presentation are to US currency, unless otherwise stated. References to “Woodside” may be references to Woodside Energy Group Ltd and/or its applicable subsidiaries (as the context requires). This presentation does not include any express or implied prices at which Woodside will buy or sell financial products. A securities rating is not a recommendation to buy, sell or hold securities and may be subject to revision or withdrawal at any time.



Agenda

Item	Presenter
Acknowledgement of Country	Sarah-Jayne Morgan
Introductions	Sarah-Jayne Morgan
Safety Share	Amanda Fuery
Operations update	Derek Paulgaard
Projects update	Kieran Cranny
Community contributions	Amanda Fuery
Around the table	All
Thank you and wrap up	Derek Paulgaard

Attendees
Regional Development Australia – Pilbara
Karratha and Districts Chamber of Commerce and Industry
Department of Education
City of Karratha
Karratha Central Health Care
RecfishWest
Community member x1



Acknowledgement of Country

Sarah-Jayne Morgan



Introductions and welcome

Sarah-Jayne Morgan



Reminders

- Respect the opinions of all Karratha CLG members and treat members with courtesy and respect.
- Declare any perceived or actual conflicts of interest or feel free to step out of the room for certain agenda items.
- Disseminate project information, status and direction within your community, organisation or network, and convey feedback to CLG meetings.



Safety Share

Amanda Fuery

DRIVER SAFETY



*Source: Road Safety Commission, YouTube



Operations Update

Derek Paulgaard

Operations update

Planned maintenance campaigns

- 2026 will see significant activity across operations and projects, this includes major planned maintenance campaigns at both Pluto LNG and Karratha Gas Plant.
- The Woodside operated Pluto LNG facility turnaround will include completion of tie ins to support the processing of Scarborough gas as well as TOT valve replacements.
- Approximately 500 additional people will be required to complete the work scope.
- At the Woodside operated Karratha Gas Plant we will have a major turnaround campaign on LNG4.
- These planned maintenance scopes alongside commissioning of Train 2 will mean elevated flaring and more people on and around site.
- To minimise impact to the community, we plan to utilise village accommodation, bus workforce to and from our assets and reinforce our expectation that people working at our facilities engage respectfully at work and in the community.



Operations update

Shipping milestone

- Event held in November to mark the first arrival of the Woodside Jirrubakura at our Karratha LNG facilities.
- Event was attended by representatives from State Government, Murujuga Aboriginal Corporation and Ngarluma Aboriginal Corporation.
- Jirrubakura is one of two new state-of-the-art LNG carriers built in South Korea for Woodside, designed to support the Scarborough Energy Project.
- The Jirrubakura (crayfish) and the Barrumbara (barramundi) are the first vessels supporting Woodside LNG operations to have been given Indigenous names.
- We are proud to have worked with traditional custodians of the land on which we operate to give these ships Indigenous names that reflect species endemic to our region.

Condensate tank decommissioning

- After almost a year of preparation and planning, local contractor Contract Resources has safely completed the decommissioning of one of the Karratha Gas Plant's condensate storage tanks.
- The 42-year-old tank was 22m high, has a diameter of 67m and could hold up to 77,500m³ of liquid.
- We expect that there will be additional more minor decommissioning work carried out at KGP as we progress Late Life Asset Management





Scarborough Energy Project

- The Scarborough field is located 375km off the Pilbara coast of WA.
- The Scarborough and Pluto Train 2 Projects were 91% complete as at the end of September (excluding Pluto Train 1 modifications).
- Integration and commissioning activities for the floating production unit (FPU) are continuing ahead of departure from China. The FPU is expected to arrive at the field in the Australian summer.
- The drilling team has completed installation of the last Scarborough well.
- Key activities underway for Pluto Train 2 include piping and electrical installation, system testing and commissioning.
- Bechtel's Pluto Train 2 workforce is currently near its peak of 2100 people and we expect this number to decrease to roughly 1,000-1,200 people in Q1 next year and 800 people by Q2.
- Our Pluto Train 1 Modifications Project has ramped up in recent months, and new modules to support this project will arrive in Dampier port in early 2026.
- One of these modules will be our largest module ever delivered to Dampier (roughly 4,600 tonnes).



Pluto Train 2 commissioning

- As we look to 2026, we will continue to focus on minimising our impact to community. This includes through the commissioning process.
- The process of initial operation and testing of a new facility is called commissioning.
- Commissioning is conducted to verify that equipment and systems are installed correctly and function safely.
- A comprehensive approach is taken to ensure that the Pluto Train 2 project is thoroughly and efficiently tested in compliance with all regulatory requirements, while minimising environmental impacts.
- We expect increased flaring towards the middle of 2026 as gas is introduced to Pluto Train 2 during the commissioning process.
- Woodside complies with state and federal regulatory requirements that apply to flaring activities.
- We also implement environmental air quality monitoring so that our operations minimise risks and impacts to the environment.
- We will communicate further information around schedule and expected activities closer to this time.



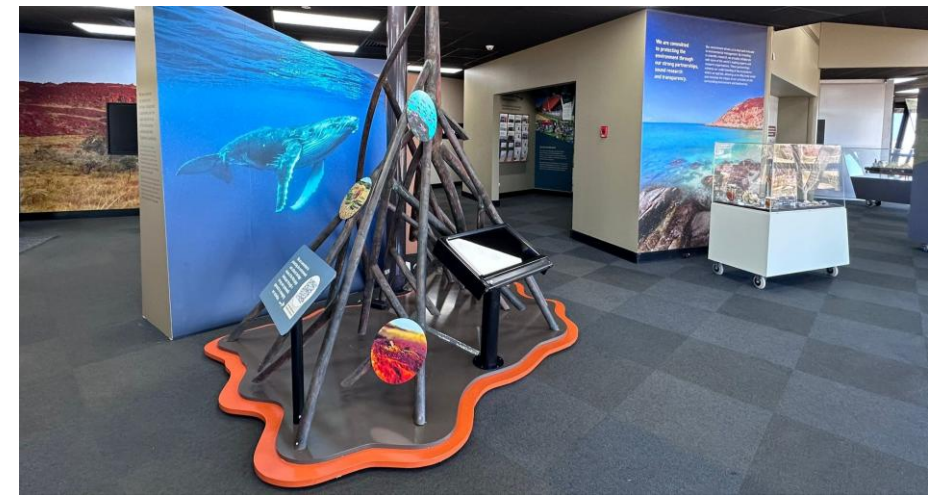


Community contribution

Amanda Fuery

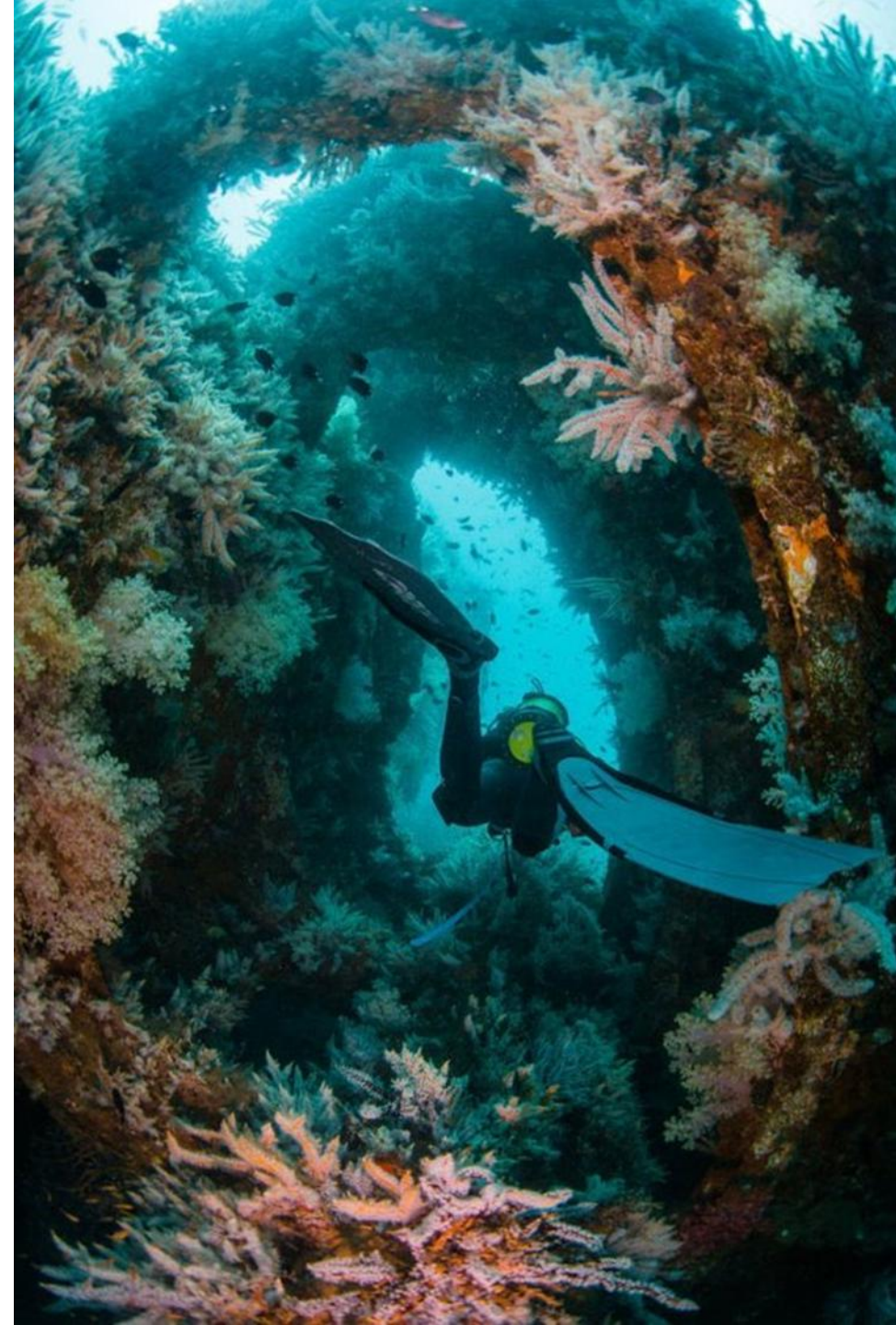
North West Shelf Visitor Centre

- We recognise the value of the North West Shelf Visitor Centre in supporting tourism outcomes in the City of Karratha.
- In 2025 the Visitor Centre underwent a major refresh to enhance visitor experience and update information on our operations and activity in the community.
- We are pleased to have been able to secure a number of positive local content outcomes as part of the work scope.
- Local suppliers engaged to deliver the refurbishment include:
 - Birndirri (CPC Engineering)
 - Impact Digi
 - C-Signs
 - Pilbara Steel Flashing Suppliers
 - MM Electrical Karratha
 - Thrifty-Link Hardware (Karratha Timber and Building Supplies)
 - CEC Engraving
 - Jupps Flooring
- During our 2025 visiting hours, we welcomed ~2,500 community visitors, including the local Karratha Community, visitors to the region, school groups and tour groups.



RecfishWest Dampier Artificial Reef

- The Enfield Joint Venture funded the construction of 48 concrete reef modules as part of an artificial reef proposal from Recfishwest off Exmouth that did not eventuate.
- When a decision was made not to proceed, RecfishWest developed another proposal for the modules to be repurposed for the Dampier Artificial Reef Project.
- RecfishWest have since worked with local stakeholders including Murujuga Aboriginal Corporation, the City of Karratha and local fishers on the reef proposal and obtained the relevant environmental permits for deployment of the structure.
- Work to install the reef will commence at the end of this month.



Location

LOCATED BEHIND ROSEMARY ISLAND, 28 KM FROM DAMPIER BOAT RAMP

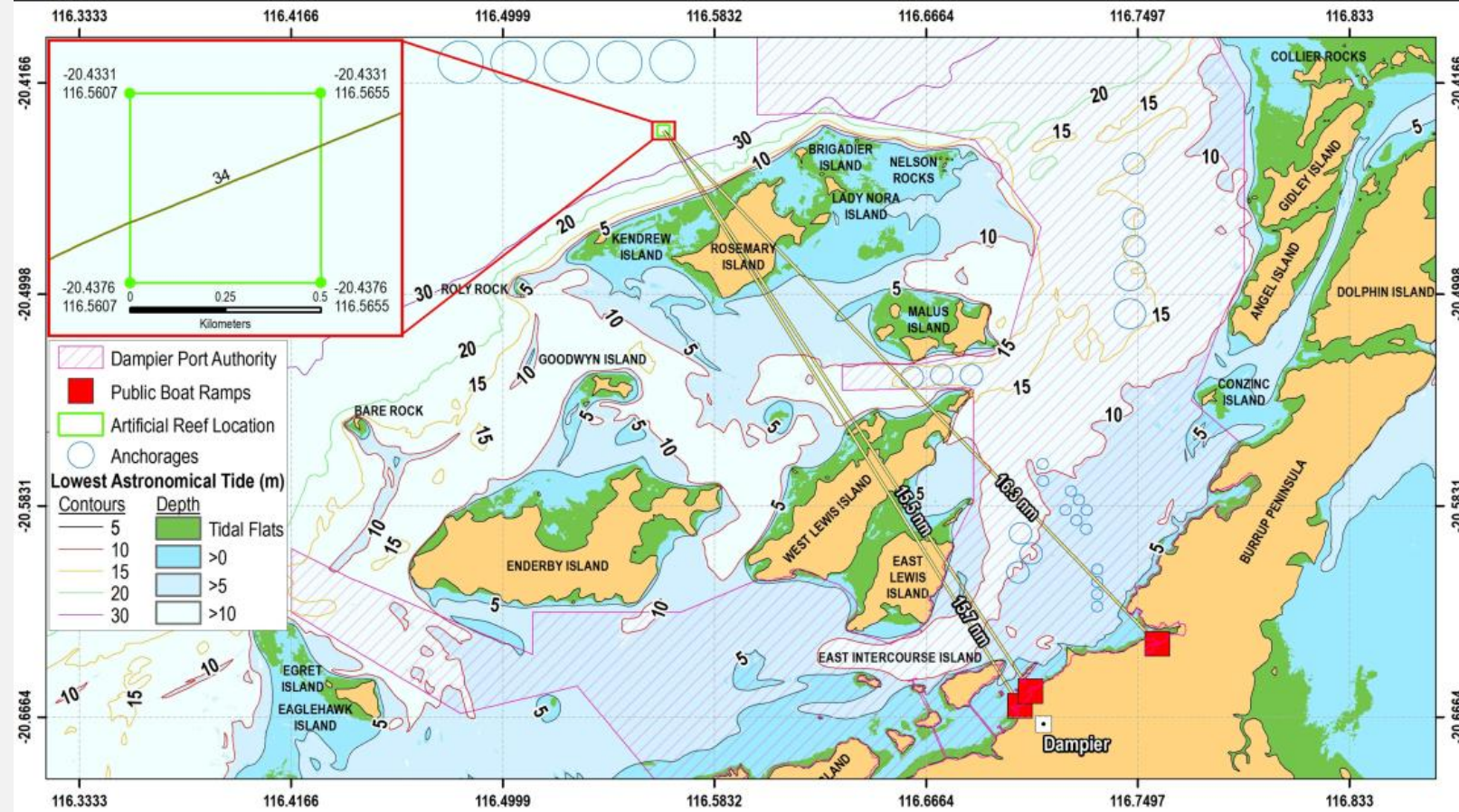


Figure: Concrete artificial reef modules located in Karratha.

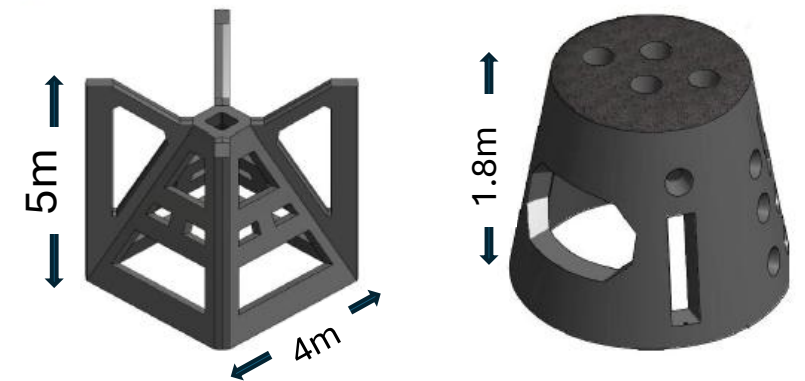


Figure: Reef Pyramid (left) and Bombora (right) artificial reef modules.



Community contribution

Housing

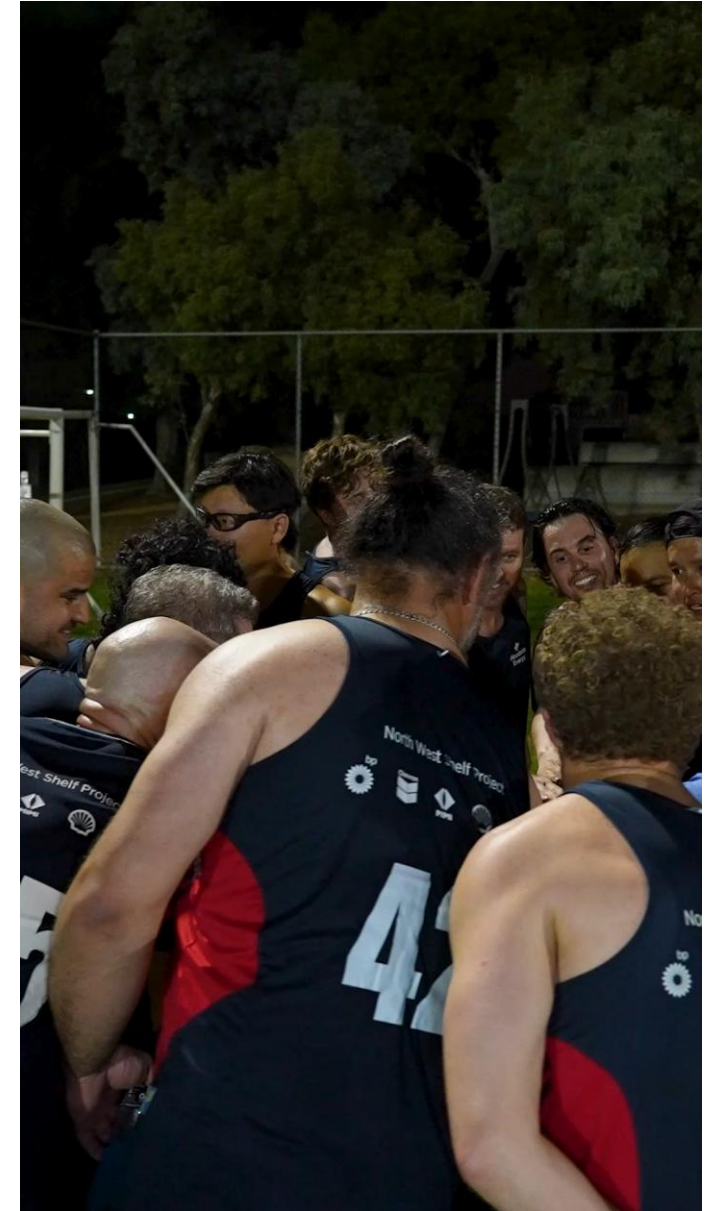
- The Woodside-operated North West Shelf and Pluto LNG are each undertaking careful planning to ensure their workforces can be accommodated in Karratha, balanced with the need to take into account pressures on the local housing market.
- Our housing portfolio is currently close to capacity at more than 95% occupancy.
- Our long-term approach to portfolio renewal, including the delivery of 50 new homes and divesting older housing stock, has supported the community by:
 - providing opportunities to purchase entry level housing stock that would not otherwise have been available.
 - supporting the local community with 3 houses earmarked for sale being repurposed to support local not-for-profit organisations.
 - 30 homes supporting the City of Karratha Service Worker Accommodation Initiative.
 - making a number of homes available to Karratha residents to rent on the open market.

Social Economic Impact Assessment (SEIA) Update

- Work to complete our SEIA continues and we anticipate that consultants GHD will be in Karratha and Roebourne in February to conduct further stakeholder engagement.
- As part of the consultation process we expect that GHD will engage with community on the identified impacts and opportunities and measures to address these.

Community contribution

- Last month marked the 16th annual Clontarf Foundation vs Woodside Gaelic Football Match at Peg's Creek Oval, showcasing the strength and longevity of our partnership.
- Our collaboration with the Karratha Clontarf Foundation continues to deliver positive outcomes for local youth and the community.
- Over the years, this partnership has contributed to improved engagement, confidence, and opportunities for Clontarf students.
- The event brings together Woodsiders and Clontarf students, fostering relationships in a supportive and inclusive environment.
- This year, we were fortunate to have the Fremantle Dockers Community Goals team join us, adding excitement and inspiration for participants.
- The Gaelic match remains a fun and meaningful way to strengthen ties between our people and the next generation



* Video source: Fremantle Dockers social media.



Round Table Discussion

Feedback or concerns?

If a community member would like to provide feedback, or has a concern or grievance – contact us:

Woodside Community Line: 1800 634 988

Email: northwestcommunities@woodside.com



2026 meeting schedule – proposed

Q1	Friday 27 March 2026
Q2	Friday 3 July 2026
Q3	Friday 25 September 2026
Q4	Friday 27 November 2026



Season's Greetings

