



# Karratha Community Liaison Meeting

---

Thursday 25 September 2025



# Disclaimer

## Information

This presentation has been prepared by Woodside Energy Group Ltd (“Woodside”). All information included in this presentation, including any forward-looking statements, reflects Woodside’s views held as at the date of this presentation and, except as required by applicable law, neither Woodside, its related bodies corporate, nor any of their respective officers, directors, employees, advisers or representatives (“Beneficiaries”) intends to, undertakes to, or assumes any obligation to, provide any additional information or update or revise any information or forward-looking statements in this presentation after the date of this presentation, either to make them conform to actual results or as a result of new information, future events, changes in Woodside’s expectations or otherwise.

This presentation may contain industry, market and competitive position data that is based on industry publications and studies conducted by third parties as well as Woodside’s internal estimates and research. While Woodside believes that each of these publications and third party studies is reliable and has been prepared by a reputable source, Woodside has not independently verified the market and industry data obtained from these third party sources and cannot guarantee the accuracy or completeness of such data. Accordingly, undue reliance should not be placed on any of the industry, market and competitive position data contained in this presentation. To the maximum extent permitted by law, neither Woodside, its related bodies corporate, nor any of their respective Beneficiaries, assume any liability (including liability for equitable, statutory or other damages) in connection with, any responsibility for, or make any representation or warranty (express or implied) as to, the fairness, currency, accuracy, adequacy, reliability or completeness of the information or any opinions expressed in this presentation or the reasonableness of any underlying assumptions.

## No offer or advice

This presentation is not intended to and does not constitute, form part of, or contain an offer or invitation to sell to Woodside shareholders (or any other person), or a solicitation of an offer from Woodside shareholders (or any other person), or a solicitation of any vote or approval from Woodside shareholders (or any other person) in any jurisdiction. This presentation has been prepared without reference to the investment objectives, financial and taxation situation or particular needs of any Woodside shareholder or any other person. The information contained in this presentation does not constitute, and should not be taken as, financial product or investment advice. Woodside encourages you to seek independent legal, financial, taxation and other professional advice before making any investment decision.

This presentation shall not be distributed, transmitted, published, reproduced or otherwise made available to any other person, in whole or in part, directly or indirectly, for any purposes whatsoever. In particular, this presentation and the information contained herein may not be taken or transmitted, in, into or from and may not be copied, forwarded, distributed or transmitted in or into any jurisdiction in which such release, publication or distribution would be unlawful. The release, presentation, publication or distribution of this presentation, in whole or in part, in certain jurisdictions may be restricted by law or regulation, and persons into whose possession this presentation comes should inform themselves about, and observe, any such restrictions. Any failure to comply with these restrictions may constitute a violation of the laws of the relevant jurisdiction. Woodside does not accept liability to any person in relation to the distribution or possession of this document in or from any such jurisdiction.

## Forward-looking statements

This presentation contains forward-looking statements with respect to Woodside’s business and operations, market conditions, results of operations and financial condition. All statements, other than statements of historical or present facts, are forward-looking statements and generally may be identified by the use of forward-looking words such as ‘guidance’, ‘foresee’, ‘likely’, ‘potential’, ‘anticipate’, ‘believe’, ‘aim’, ‘aspire’, ‘estimate’, ‘expect’, ‘intend’, ‘may’, ‘target’, ‘plan’, ‘strategy’, ‘forecast’, ‘outlook’, ‘project’, ‘schedule’, ‘will’, ‘should’, ‘seek’ and other similar words or expressions. Similarly, statements that describe the objectives, plans, goals or expectations of Woodside are forward-looking statements. Forward-looking statements in this presentation are not guidance, forecasts, guarantees or predictions of future events or performance, but are in the nature of future expectations that are based on management’s current expectations and assumptions. Those statements and any assumptions on which they are based are subject to change without notice and are subject to inherent known and unknown risks, uncertainties, assumptions and other factors, many of which are beyond the control of Woodside, its related bodies corporate and their respective Beneficiaries. If any of the assumptions on which a forward-looking statement is based were to change or be found to be incorrect, this would likely cause outcomes to differ from the statements made in this presentation.

Important factors that could cause actual results to differ materially from those in the forward-looking statements include, but are not limited to, fluctuations in commodity prices, actual demand for Woodside products, currency fluctuations, geotechnical factors, drilling and production results, gas commercialisation, development progress, operating results, engineering estimates, reserve and resource estimates, loss of market, industry competition, environmental risks, climate related risks, physical risks, legislative, fiscal and regulatory developments, changes in accounting standards, economic and financial markets conditions in various countries and regions, political risks, the actions of third parties, project delay or advancement, regulatory approvals, the impact of armed conflict and political instability (such as the ongoing conflict in Ukraine) on economic activity and oil and gas supply and demand, cost estimates, the effect of future regulatory or legislative actions on Woodside or the industries in which it operates, including potential changes to tax laws, the impact of general economic conditions, inflationary conditions, prevailing exchange rates and interest rates and conditions in financial markets, and risks associated with acquisitions, mergers and joint ventures, including difficulties integrating businesses, uncertainty associated with financial projections, restructuring, increased costs and adverse tax consequences, and uncertainties and liabilities associated with acquired and divested properties and businesses.

# Disclaimer

---

## **Forward-looking statements (continued)**

A more detailed summary of the key risks relating to Woodside and its business can be found in the “Risk” section of Woodside’s most recent Annual Report released to the Australian Securities Exchange and in Woodside’s most recent Annual Report on Form 20-F filed with the United States Securities and Exchange Commission and available on the Woodside website at <https://www.woodside.com/investors/reports-investor-briefings>. You should review and have regard to these risks when considering the information contained in this presentation.

Investors are strongly cautioned not to place undue reliance on any forward-looking statements. Actual results or performance may vary materially from those expressed in, or implied by, any forward-looking statements.

## **Climate strategy and emissions data**

All greenhouse gas emissions data in this presentation are estimates, due to the inherent uncertainty and limitations in measuring or quantifying greenhouse gas emissions, and our methodologies for measuring or quantifying greenhouse gas emissions may evolve as best practices continue to develop and data quality and quantity continue to improve.

Woodside “greenhouse gas” or “emissions” information reported are net equity Scope 1 greenhouse gas emissions, Scope 2 greenhouse gas emissions, and/or Scope 3 greenhouse gas emissions, unless otherwise stated.

For more information on Woodside’s climate strategy and performance, including further details regarding Woodside’s targets, aspirations and goals and the underlying methodology, judgements, assumptions and contingencies, refer to Woodside’s Climate Transition Action Plan and 2023 Progress Report (CTAP) available on the Woodside website at <https://www.woodside.com/sustainability/climate-change>.

The footnotes to this presentation may provide clarification regarding the use of terms such as “lower carbon” under Woodside’s climate strategy. A full glossary of terms used in connection with Woodside’s climate strategy is contained in the CTAP.

## **Other important information**

All references to dollars, cents or \$ in this presentation are to US currency, unless otherwise stated. References to “Woodside” may be references to Woodside Energy Group Ltd and/or its applicable subsidiaries (as the context requires). This presentation does not include any express or implied prices at which Woodside will buy or sell financial products. A securities rating is not a recommendation to buy, sell or hold securities and may be subject to revision or withdrawal at any time.



# Agenda

---

Item	Attendees
Acknowledgement of Country	Karratha Central Health Care
Introductions	Department of Creative Industries Tourism and Sport
Values moment	
Operations update	Karratha and Districts Chamber of Commerce and Industry
Projects update	Dampier Community Association
Community Contributions	Department of Education
Environment plans	City of Karratha
Around the table	Pilbara Ports
	Community members x 2



# Acknowledgement of Country

---



# Introductions and welcome

---



# Reminders

---

- Respect the opinions of all Karratha CLG members and treat members with courtesy and respect.
- Declare any perceived or actual conflicts of interest or feel free to step out of the room for certain agenda items.
- Disseminate project information, status and direction within your community, organisation or network, and convey feedback to CLG meetings.



# Values Moment

---

# 20 YEARS OF CORPORATE VOLUNTEERING





# Operations Update

---

# Operations update

## NWS Project Extension

- On Friday 12 September 2025, the Federal Government provided final environmental approval for the North West Shelf Project Extension.
- This, together with the State Government approval, provides certainty for the ongoing operation of the North West Shelf Project and its onshore processing facility, the Karratha Gas Plant, beyond 2030.
- Both Federal approval and the State Government approval received in December 2024 include conditions to manage cultural heritage, reduce emissions and manage air quality and marine discharges.
- In addition, Woodside had previously committed to complying with all air quality objectives and standards from the Murujuga Rock Art Monitoring Program (MRAMP).

## Apprenticeships and Traineeships

- Woodside was represented in the WA Training Awards, with two finalists in the Apprentice of the Year category: Tana Kickett, Maintenance INLEC and Jessica Garnett, Maintenance Mechanical Technician
- The WA Training Awards, managed by the State Government's Department of Training and Workforce Development, recognise individuals and organisations making outstanding contributions to the state's vocational training sector.

## Condensate tank decommissioning

- This month we commenced planned decommissioning of a condensate tank at KGP. Work is being carried out by Contract Resources and Ausdecom and is expected to be completed by the end of the month.



# Pluto Flare Maintenance

- Maintenance is being carried out on the Pluto flare systems as part of our ongoing work to ensure the safe and efficient operation of the Pluto facility as well as improve focus on Green House Gas (GHG) emissions through the flare.
- Work has commenced and will continue in stages through to early 2026
- As well as continuing to improve our GHG emissions performance the work will address;
  - Safety & Reliability - these upgrades are part of our regular maintenance cycle to ensure the flare system continues to operate safely and reliably.
  - Environmental Performance - we're improving systems to reduce smoke and enhance combustion efficiency, consistent with our GHG emissions management commitments.
  - Future Readiness - the new flare tip design supports ongoing operations and future integration with Pluto Train 2.
- As part of the system testing you may notice intermittent visible flaring, potentially including visible smoke, particularly during certain periods to optimise safety and environmental performance.
- Any flaring with potential for visible smoke will be communicated in line with our regulatory requirements.



# LiDAR helicopter survey

- Woodside have engaged Bridger Photonics to conduct an aerial methane emissions survey over KGP and PLP using a helicopter-mounted Gas Mapping LiDAR system. This initiative supports Woodside’s commitment to the OGMP 2.0.
- Woodside joined Oil and Gas Methane Partnership 2.0 (OGMP 2.0) in January 2024. It is the United Nations Environment Programme’s flagship oil and gas methane mitigation and measurement programme.
- OGMP 2.0 is the most comprehensive reporting framework for methane emissions in the oil and gas sector.
- The data collected will help identify methane sources, validate emissions inventories, and inform future mitigation strategies.

- Proposed schedule

4/10	Reconnaissance flight + Interconnector Scan x 2 / Mass Balance
5/10	PLP Scan x 2 (3pm+)
6/10	KGP Scan x 2
7/10	Backup Day KGP / Interconnector / Mass Balance
8/10	Backup Day KGP / Interconnector / Mass Balance

- Flight information

<b>Aircraft</b>	Bell 206 Longranger
<b>Altitude</b>	600 ft (183m) general, KGP 750 ft (229m), PLP 850ft (259m) over flares
<b>Speed</b>	~120 kph
<b>Scan Duration</b>	KGP: 90 min, Pluto: 70 min, Interconnector: 30 min
<b>Pattern</b>	“Mow-the-lawn” pattern, E-W and N-S options





# Projects update

## Scarborough Energy Project

- Is over 86% complete (excluding Pluto Train 1 modifications) and is progressing towards first LNG cargo, targeted for the second half of 2026.
- Following the safe and successful float over activities in May, the project continues to work towards sail away of FPU from China.

## Pluto Train 2

- Project is currently at peak construction with Bechtel currently employing about 2000 frontline workers on the project.
- A\$102m spent on local content in the city of Karratha as at end of Q2 2025.

## Pluto Train 1 modifications

- Progressing towards major shutdown and tie-in in 2026.
- Largest modules expected to arrive in Dampier Port towards the end of the year.

# Housing update

- The Woodside-operated NWS and Pluto Projects are each undertaking careful planning to ensure their workforces can be accommodated in Karratha, balanced with the need to take into account pressures on the local housing market.
- Our long term approach to portfolio renewal, including the delivery of 50 new homes and divesting older housing stock, has supported the community by:
  - providing opportunities to purchase entry level housing stock that would not otherwise have been available.
  - supporting the local community with 3 houses earmarked for sale being repurposed to support local not-for-profit organisations.
  - 30 homes supporting the City of Karratha Service Worker Accommodation Initiative.
  - making a small number of homes available to Karratha residents to rent on the open market.

## New builds

- Awarded to local builders Thomas Building and Yurra.
- Construction of 30 new houses have commenced with up to ~8 slabs completed and framing commenced.
- New houses will be delivered commencing Q1 2026 with completion expected Q3 2026.





# Community contribution

---

# Community Contribution



Karratha Community Garden were Woodside Community Grant recipients, 2025

## Scaffold donation

- Yurra and Woodside have worked collaboratively on a project to re-purpose redundant scaffold materials, no longer being used at Karratha Gas Plant.
- 14 tonnes of Scaffold donated to Roebourne Work Camp and used to make furniture for not-for-profit organisations and local community group.
- Project supports Roebourne Work Camp participants develop employable skills, as well as providing benefits to Pilbara regional communities.

## KDCCI Business Awards

- Woodside and its Joint Venture partners are a proud partner of the Karratha and Districts Chamber of Commerce and Industry and the Business Excellence Awards.
- In 2025 we again sponsored the Indigenous Business Excellence Award for Best Aboriginal Business, which was won by Winyama Contracting Group.

## Woodside Community Grants

- The Woodside Community Grants program is part of our commitment to build local capacity and develop opportunities for community wellbeing.
- Local clubs and not-for-profit organisations can apply for a community grant of up to \$5,000 to support community initiatives in the City of Karratha.
- Round 2 applications open Wednesday, 1 October 2025 and close on 31 October 2025.



# Environment Plans

---

# NWS PHASE 1 P&A AND TPA03 WELL INTERVENTION EP – UPDATE

## CARNARVON BASIN, NORTH-WEST AUSTRALIA

### Environment plan consultation

#### Overview

- Woodside is consulting on the plug and abandonment (P&A) of five NWS Phase 1 production wells and well intervention on the TPA03 production well.
- The closest well to shore is approximately 125 km north of Dampier. The wells are in water depths ranging from approximately 77 m to 128 m.

#### Proposed activities

- P&A of the AP 2, AP 3, and AP 4 wells in the Angel field.
- P&A of the PER02 and PER04 wells in the Perseus-over-Goodwyn (PoG) field.
- Well intervention activities at the TPA03 well in the Tidepole field.
- Activities may be carried out using a moored or hybrid semi-submersible mobile offshore drilling unit (MODU). Preparation and support activities will be done by offshore support vessels.
- Approximate timings – activities are presently expected to commence around Q2 2026.

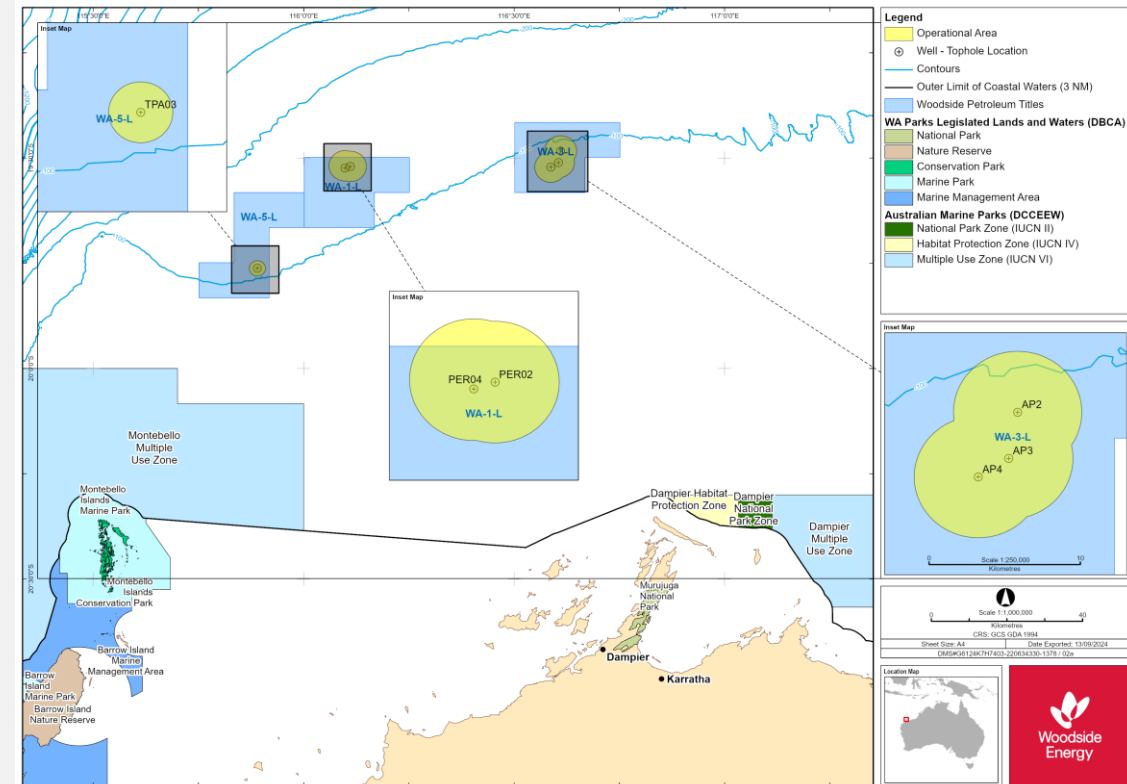
#### We want to hear from you

We are seeking input from relevant persons whose functions, interests or activities may be impacted.

#### Find out more or provide input

Learn more about the NWS P&A and TPA03 Well Intervention EP at [woodside.com/what-we-do/consultation-activities](https://www.woodside.com/what-we-do/consultation-activities)

If you would like to comment on the proposed activities, or would like additional information, please contact Woodside before **10 October 2025** via: [consultation@feedback.woodside.com](mailto:consultation@feedback.woodside.com) | **Toll free: 1800 442 977**



Operational Area of the NWS Phase 1 P&A and TPA03 Well Intervention EP

# PLUTO 4D M3 MARINE SEISMIC SURVEY EP

## CARNARVON BASIN, NORTH-WEST AUSTRALIA

### Environment plan consultation

#### Overview

- Woodside is consulting on the Pluto 4D M3 (Monitor 3) Marine Seismic Survey (MSS) Environment Plan (EP).
- The EP covers seismic data acquisition and support operations from a support vessel and chase vessel.
- The survey will be conducted over the Pluto reservoir in Commonwealth waters, approximately 28 km north-west of the Montebello Islands and 150 km north-west of Dampier.

#### Proposed activities

- The proposed activity involves acquiring 4D (time-lapse) seismic data using an acoustic source (dual array) and 12 solid streamers towed behind a survey vessel.
- To obtain time-lapse data, the seismic survey will replicate as accurately as possible previous Pluto monitor surveys, undertaken in 2016 and 2020. The new data will be compared with previous data to observe subtle differences within and surrounding the reservoir.
- The proposed activity is typical of seismic surveys conducted in Australian marine waters, in terms of technical methods and procedures.

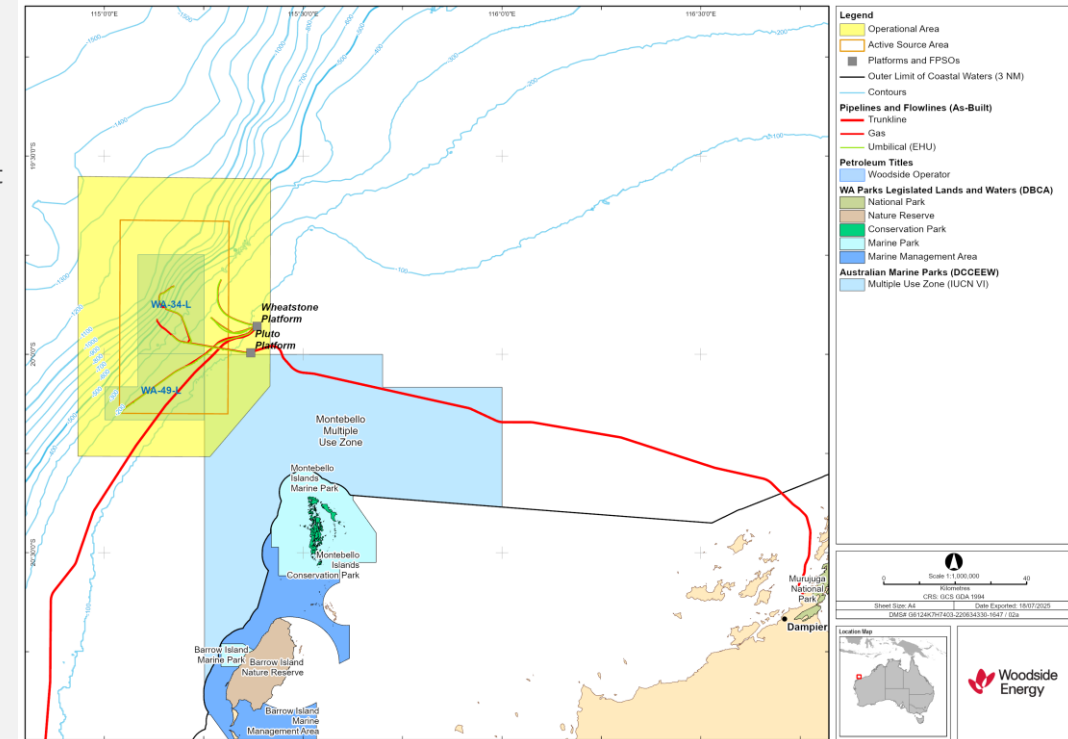
#### We want to hear from you

We are seeking input from relevant persons whose functions, interests or activities may be impacted.

#### Find out more or provide input

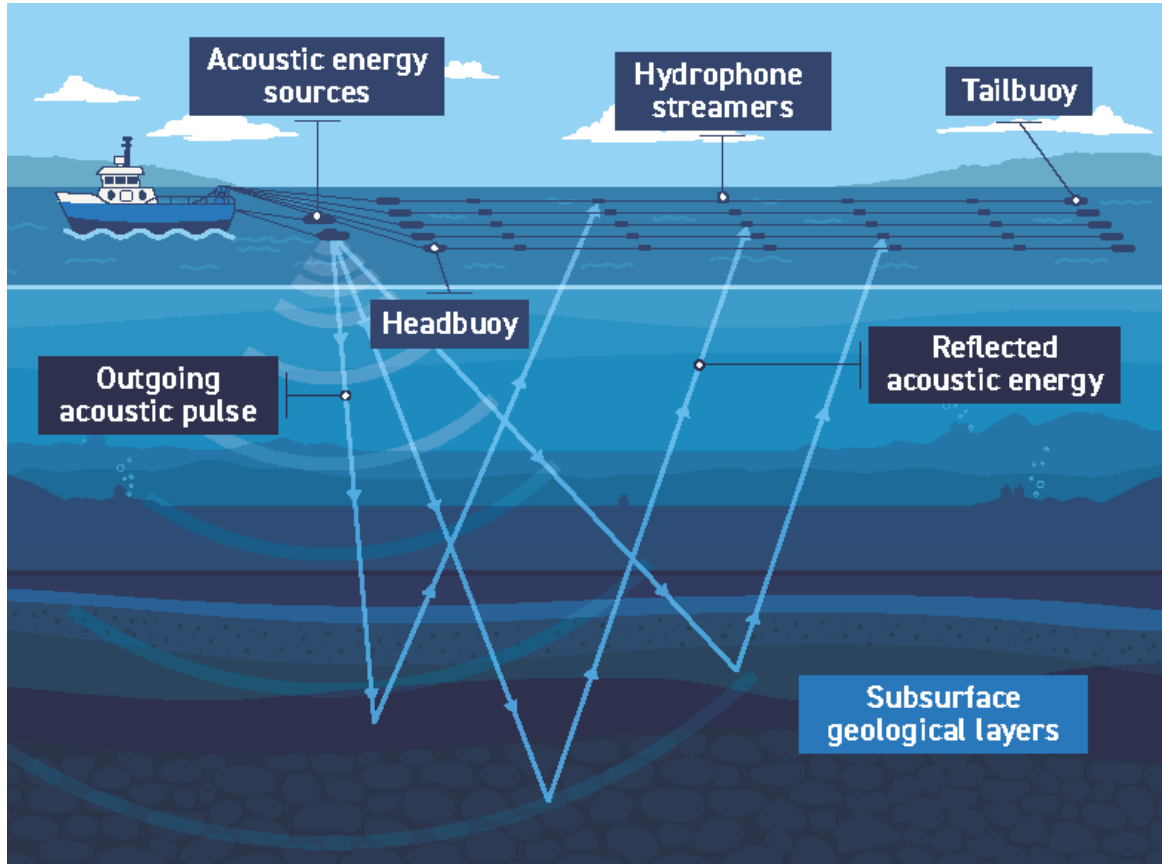
Learn more about the Pluto 4D M3 Marine Seismic Survey EP at [woodside.com/what-we-do/consultation-activities](https://www.woodside.com/what-we-do/consultation-activities)

If you would like to comment on the proposed activities, or would like additional information, please contact Woodside before **24 October 2025** via: [consultation@feedback.woodside.com](mailto:consultation@feedback.woodside.com) | **Toll free: 1800 442 977**



Operational Area for the Pluto 4D M3 Marine Seismic Survey EP

# How Do Marine Seismic Surveys Work?



- Marine seismic surveys are conducted by purpose-built survey vessels that tow specialised equipment placed in an array of long marine streamers.
- These vessels proceed at low speeds, typically around 4–5 knots (7.4–9.3 km/h), following predetermined sail lines to systematically map the survey area.
- As the vessel moves, a sound source located at its rear releases compressed air as soundwaves into the water column at regular, short intervals.
- The soundwaves are reflected from subsurface rock layers to the water's surface, a bit like an echo. Sensitive microphones known as hydrophones, which are positioned within the streamers trailing behind the vessel, detect these soundwaves.
- Alternatively, hydrophones and motion-sensitive sensors known as geophones can be embedded in small devices called ocean bottom seismic nodes, which are temporarily placed on the sea floor.
- The recorded sound is processed to generate images of subsurface structures, rock layers and other features for interpretation.

# PLUTO 4D M3 MARINE SEISMIC SURVEY

## KEY IMPACTS/RISKS AND PROPOSED MANAGEMENT MEASURES

### Physical presence: interaction with other marine users

- Vessels adhere to regulatory requirements for navigational safety.
- Notify the Australian Hydrographic Office prior to commencement of the activity so that marine users are aware of the activity.
- Publish an online publicly available interactive map showing location of the seismic vessel.
- Vessels to operate automatic identification system (AIS), and tail buoys will be fitted with lights, Global Navigation Satellite System (GNSS) and virtual AIS.
- A 3 NM radius safe navigation area established around the seismic vessel and towed array.
- A chase vessel available to assist the seismic vessel and manage third-party vessel interactions.



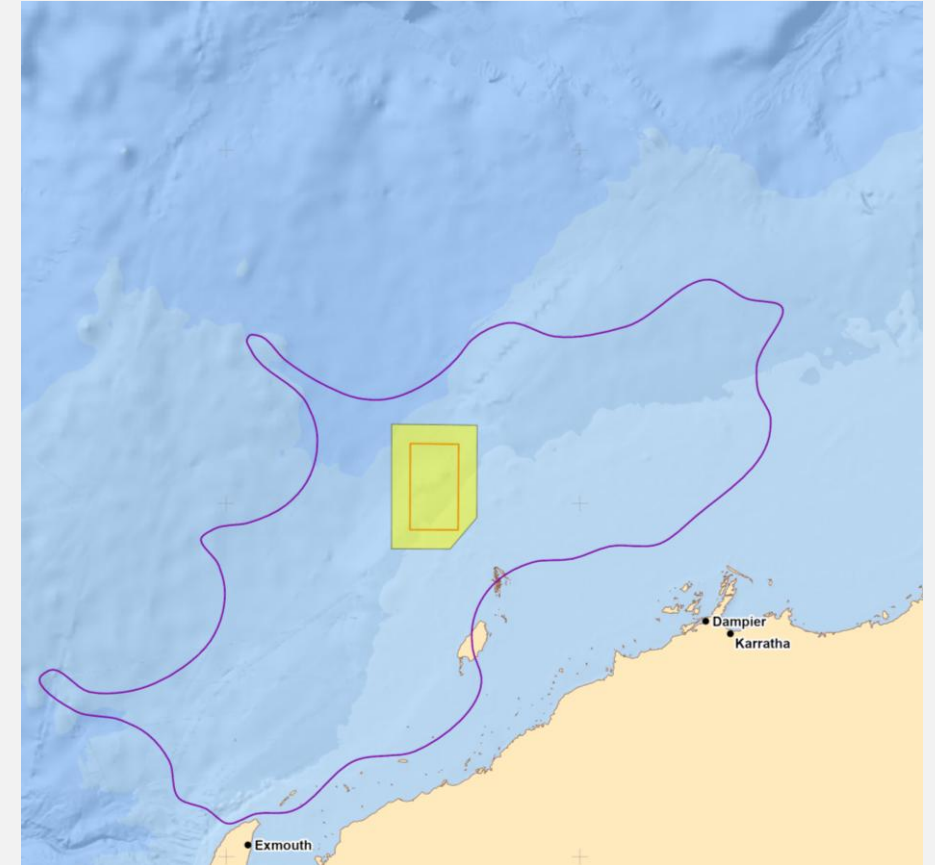
An example of a vessel used for a marine seismic survey.

# PLUTO 4D M3 MARINE SEISMIC SURVEY

## KEY IMPACTS/RISKS AND PROPOSED MANAGEMENT MEASURES

### Routine acoustic emissions: seismic survey equipment

- Comply with regulatory requirements for interactions with marine fauna to prevent adverse interactions.
- Apply observation and shutdown zones.
- Apply passive acoustic monitoring (PAM) to monitor for presence of whales.
- Trained Marine Fauna Observers to implement management procedures and adaptive management measures to minimise potential impacts to marine fauna from seismic noise.
- Timing of use of sound source to avoid the humpback whale migration and pygmy blue whale peak migration periods.
- Timing the activity to avoid shearwater fledgling period in the first two weeks of April.
- The seismic source will not be discharged outside of the Active Source Area.



The EMBA, Operational Area and Active Source Area for this EP.

# ECHO YODEL SUBSEA DECOMMISSIONING EP

## CARNARVON BASIN, NORTH-WEST AUSTRALIA

### Environment plan consultation

#### Overview

- The Echo Yodel Subsea Decommissioning Environment Plan (EP) is a 5-year revision of the in-force EP.
- Echo Yodel is located at the Goodwyn Alpha production platform in Commonwealth waters ~ 140 km north-west of Dampier.

#### Proposed activities

The EP includes:

- Removal of 12-inch rigid pipeline between the Goodwyn Alpha platform and the Yodel-3 and Yodel-4 wells.
- Removal of ancillary equipment, including inline tees, rigid tie-in spool piece, pig launcher, anode skids and stabilisation materials.
- Returning removed infrastructure to shore for recycling (where practicable) or disposal.

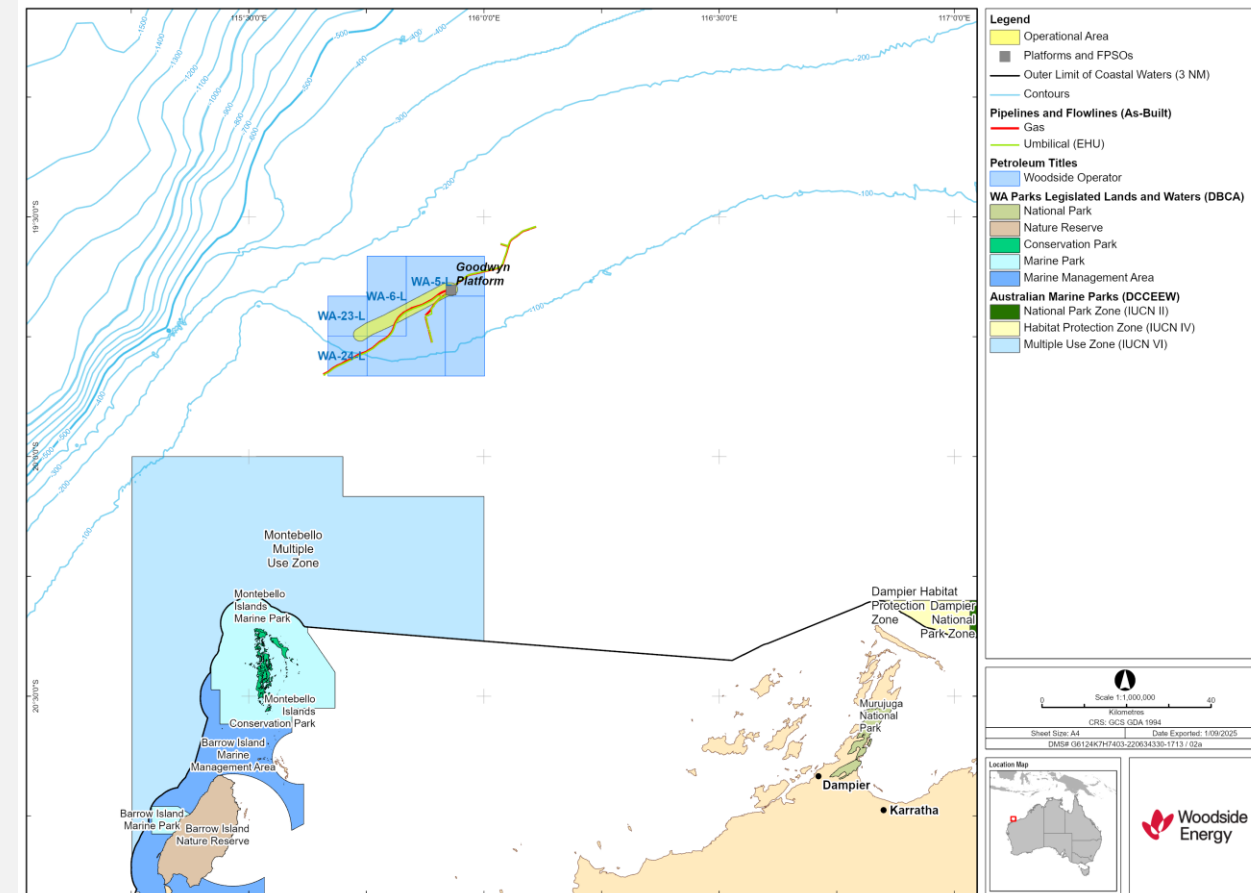
#### We want to hear from you

We are seeking input from relevant persons whose functions, interests or activities may be impacted.

#### Find out more or provide input

Learn more about the Echo Yodel Pipeline Decommissioning EP at [woodside.com/what-we-do/consultation-activities](https://www.woodside.com/what-we-do/consultation-activities)

If you would like to comment on the proposed activities, or would like additional information, please contact Woodside before **30 October 2025** via: [consultation@feedback.woodside.com](mailto:consultation@feedback.woodside.com) | Toll free: 1800 442 977



Operational Area of the Echo Yodel Subsea Decommissioning EP

# JULIMAR-BRUNELLO PLUG & ABANDONMENT (P&A) EP

## NORTHERN CARNARVON SUB-BASIN, NORTH-WEST AUSTRALIA

### Environment plan consultation

#### Overview

- Woodside is consulting on the Julimar-Brunello P&A Environment Plan (EP).
- The EP proposes to undertake activities to permanently plug and abandon (P&A) a number of subsea exploration wells in permit area WA-49-L.
- The wells are within Commonwealth waters in the Northern Carnarvon Sub-basin, approximately 185 km west north-west of Karratha.

#### Proposed activities

- Permanent P&A of three wells using a Mobile Offshore Drilling Unit (MODU).
- Remediation (i.e. removal or isolation) of Non-Water-Based-Mud (NWBM) in the annulus of one additional well.
- Vessel-based preparation and support activities (e.g. wellhead cleaning and inspections, pre-laying of moorings and blowout preventer (BOP) tethering equipment, recovery of moorings and tethering equipment).
- Cutting and recovery of wellhead infrastructure at or below the mudline following P&A or recovery by vessel at a later date.

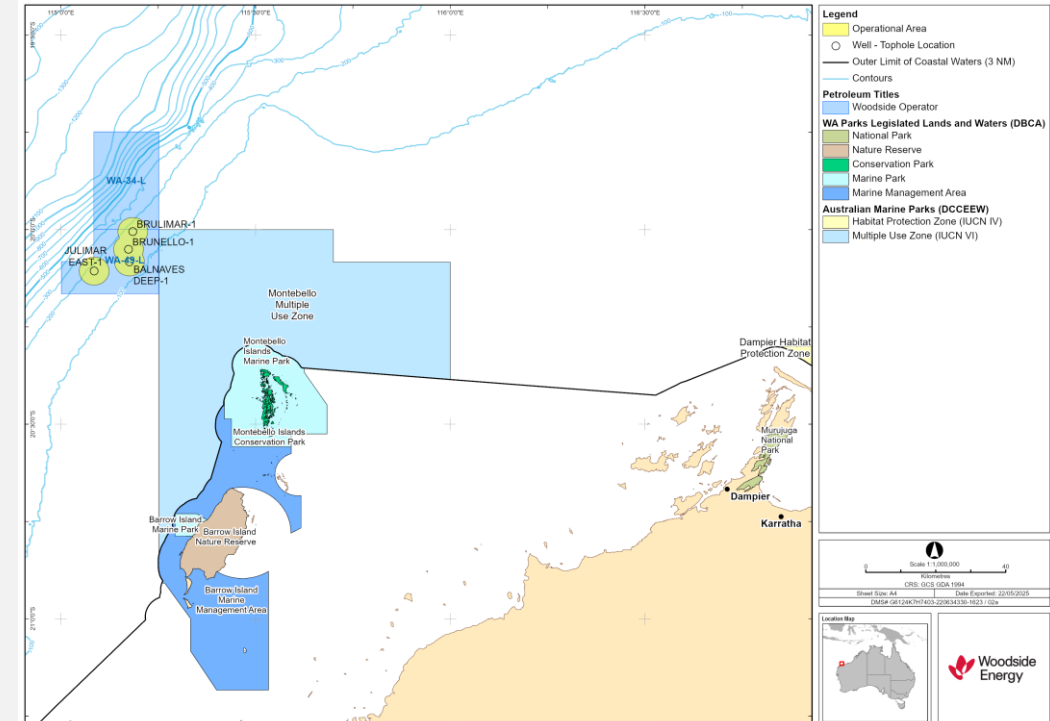
#### We want to hear from you

We are seeking input from relevant persons whose functions, interests or activities may be impacted.

#### Find out more or provide input

Learn more about Julimar-Brunello P&A EP at [woodside.com/what-we-do/consultation-activities](https://www.woodside.com/what-we-do/consultation-activities)

If you would like to comment on the proposed activities, or would like additional information, please contact Woodside before **9 September 2025** via: [consultation@feedback.woodside.com](mailto:consultation@feedback.woodside.com) | Toll free: 1800 442 977



Operational Area for the Julimar-Brunello P&A EP

# Environment plans

## Find out more or provide input

If you are an individual, organisation or community group and believe your functions, interests or activities may be impacted by the activities under these Environment Plans, we would like to hear from you.

Subscribe to receive updates including Consultation Information Sheets on new Environment Plans and the latest *Let's Talk* newsletter.

### Woodside Feedback:

Email: [consultation@feedback.woodside.com](mailto:consultation@feedback.woodside.com)

Phone: 1800 442 977



Scan the QR code or visit  
[woodside.com/consultation-activities](https://woodside.com/consultation-activities)  
to access our consultation information.



# Round Table Discussion

---

# Feedback or concerns?

**If a community member would like to provide feedback, or has a concern or grievance – contact us:**

Woodside Community Line: 1800 634 988

Email: [northwestcommunities@woodside.com](mailto:northwestcommunities@woodside.com)



# 2025 meeting schedule – proposed

Q4

Friday 28 November 2025 – afternoon sundowner