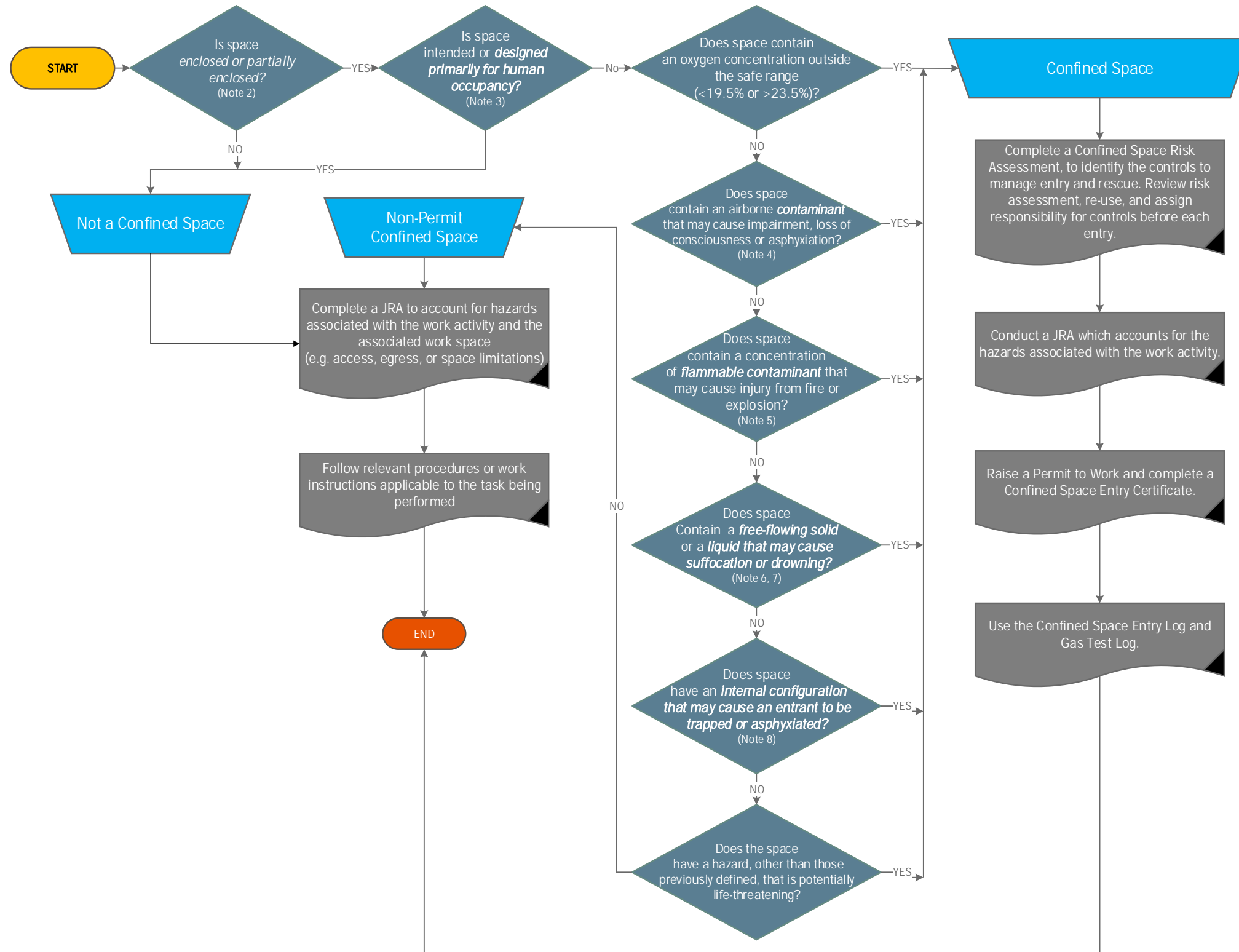


**Confined Space Entry** (Note 1)



**Notes**

- Confined Space Entry:** When a person's head or upper body breaks the plane of an opening into a space. Inserting an arm for the purpose of atmospheric testing is not considered as entry to a confined space.
- Enclosed or partially enclosed spaces** that may meet the definition criteria for a confined space are:
  - storage tanks, tank cars, process vessels, boilers, pressure vessels, silos and other tank-like compartments;
  - pipes, sewers, shafts, degreaser and sullage pits, ducts, and similar structures; and
  - any shipboard spaces entered through a small hatchway or entry point, cargo tanks, cellular double bottom tanks, duct keels, ballast and oil tanks, and void spaces.

A confined space may, or may not, have restricted means of entry and exit. Appropriately sized entry and exit points are important for the safe entry and exit or retrieval of a person(s) in an emergency. However, a restricted means of entry or exit is not a consideration in identifying an enclosed or partially enclosed space as a confined space.
- Designed for human occupancy:** Intended as a place of regular work and supplied with ventilation and other conditions necessary to support life.
- Contaminant:** Any dust, fume, mist, vapor, biological matter, gas or other substance in liquid or solid form, the presence of which may be harmful to persons.
- Flammable contaminant:** Any dust, fume, mist, vapor or gas present in the air at concentrations that can propagate a flame on contact with an ignition source.
- Free-flowing solid:** Airborne combustible dust at a concentration that meets or exceeds its LFL. NOTE: This concentration may be approximated as a condition in which the dust obscures vision at a distance of 5 feet (1.52 m) or less.
- Liquid that may cause suffocation:** A rising level of a liquid in an enclosed or partially enclosed space may cause engulfment through the inability of a person to readily exit the space.
- Internal configuration that may cause an entrant to be trapped or asphyxiated:** Any space where an occupant must crawl, climb, twist, be constrained in a narrow opening, follow a lengthy path or otherwise exert unusual effort to enter or leave, or where the entrance may become sealed or secured against opening from inside. Additionally, a space where the internal configuration may cause an entrant to be trapped (e.g., by inwardly converging walls or by a floor that slopes downward and tapers to a smaller cross section) causing asphyxiation by physical constraint.

**Applicable Documents**

Document Name	Document Number
Permit to Work Procedure	PET-HSE27-SF-PRD-00006
Job Risk Assessment Form	PET-HSE27-SF-FRM-00017
Confined Space Entry Risk Assessment	PET-HSE27-SF-FRM-00015
Permit to Work Form	PET-HSE27-SF-FRM-00012
Confined Space Entry Certificate	PET-HSE27-SF-CER-00006
Gas Test Log	PET-HSE27-SF-FRM-00014