

BROWSE TO NORTH WEST SHELF PROJECT

February 2024

Project overview

Woodside, as Operator for and on behalf of the Browse Joint Venture (BJV), is proposing to develop the Brecknock, Calliance and Torosa conventional natural gas fields located in the offshore Browse Basin, approximately 425 km north of Broome Western Australia.

The proposed concept includes two floating production storage and offloading (FPSO) facilities and an approximate 900 km pipeline to North West Shelf Project's existing infrastructure.

In the Asia Pacific region, major economies such as Japan remain clear that they need Australia to continue as a secure, affordable supplier for energy. Browse to NWS can help meet regional energy demand and provide domestic gas security to Western Australia.

Key work activities continue in support of progress towards front-end engineering design entry, including securing relevant regulatory and environmental approvals and progressing commercial agreements.

Carbon management

Carbon management is a key focus for Browse and the BJV is evaluating further carbon abatement and energy efficiency opportunities to reduce and manage greenhouse gas (GHG) emissions.

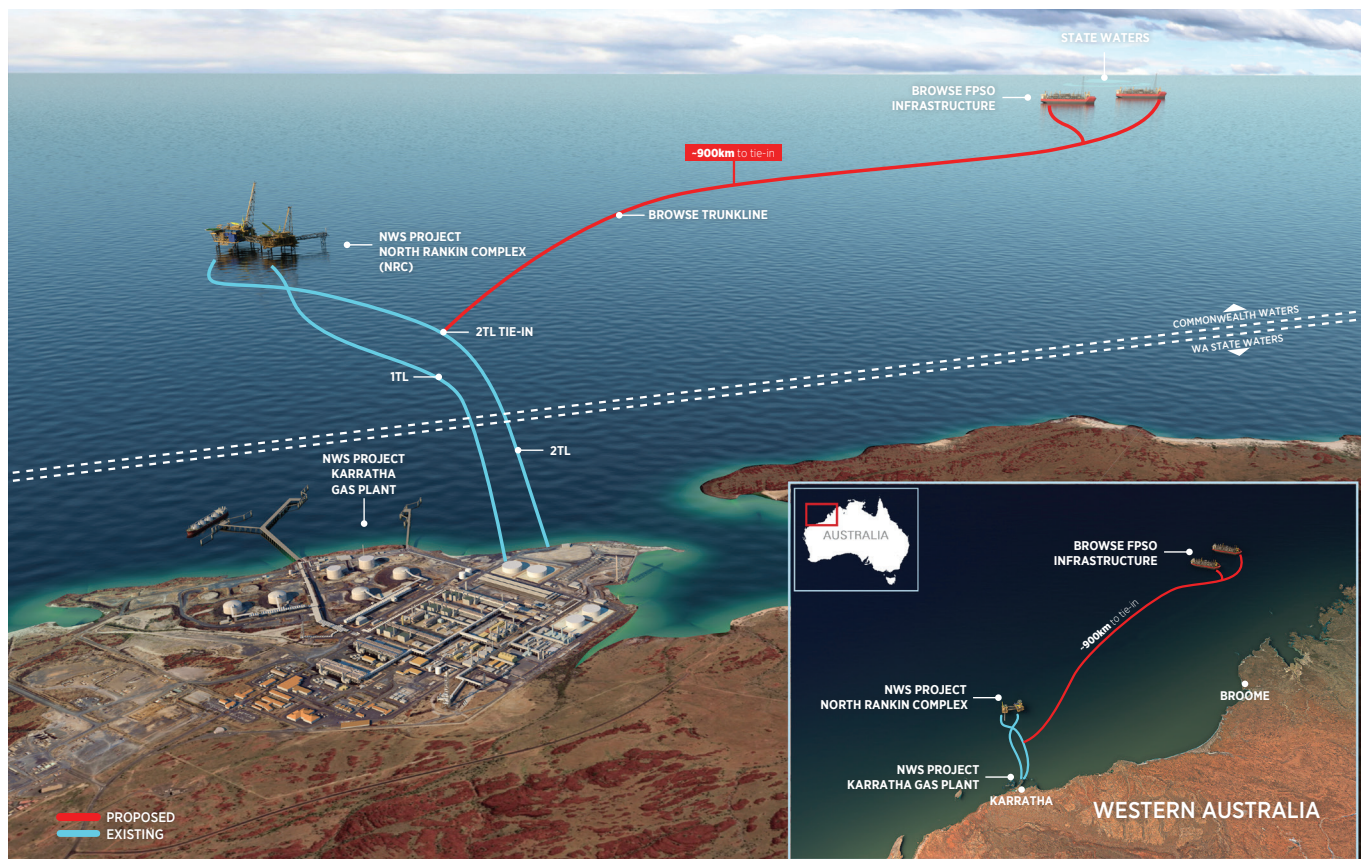
The BJV has determined that a carbon capture and storage (CCS) solution to abate a significant portion of Browse reservoir CO₂ is feasible. The CCS infrastructure has been incorporated into the offshore design and regulatory approvals processes are ongoing.

The Calliance CCS Project will be designed to sequester the majority of the reservoir CO₂ from the Browse to NWS Project. This may deliver a significant reduction in the potential scope 1 GHG emissions of the Browse development.

The NWS Joint Venture has committed to emissions reductions as part of the Greenhouse Gas Management Plan in the NWS Project Extension Environmental Review Document and is actively studying opportunities to decarbonise its facilities.

Participating interests	%
Woodside Browse Pty Ltd	30.60
BP Developments Australia Pty Ltd	44.33
Japan Australia LNG (MIMI Browse) Pty Ltd	14.40
PetroChina International Investment (Australia) Pty Ltd	10.67

Woodside Energy Ltd is the Operator



To find out more, contact Woodside by

- email to feedback@woodside.com
- call toll free 1800 442 977

Browse Development

