

21 January 2026

JOINT MEDIA RELEASE

Recfishwest and Woodside Collaborate for Dampier Artificial Reef Installation

Recfishwest and Woodside Energy are proud to announce the installation of the Dampier Artificial Reef – a new, purpose-built artificial reef designed to support local fishers and enhance marine biodiversity off the Western Australian coast.

The Dampier Artificial Reef is backed by scientific research and community input, aiming to create a new marine habitat and boost recreational fishing opportunities in the Pilbara region.

The reef consists of 48 purpose-built concrete modules installed in approximately 35 metres of water, near Rosemary Island in the Dampier Archipelago, Western Australia.

With the support of the WA Government, City of Karratha, Traditional Owners and fishing clubs, the installation of the Dampier Artificial Reef represents a significant collaboration to provide an accessible and productive marine environment the community can enjoy.

The new reef aims to provide a high-quality fishing location for species such as mackerel, trevally, cobia, cod and even sailfish, while supporting local tourism.

Recfishwest CEO Dr Andrew Rowland added, “The deployment of the Dampier Artificial Reef will provide new fishing opportunities while enhancing fish habitats. Our collaboration with Woodside demonstrates what can be achieved when industry and the recreational fishing community work together for positive outcomes.

“These scientifically designed structures build healthier oceans — supporting biodiversity, boosting fish stocks and strengthening ecosystem resilience. Most importantly, they create fantastic new fishing opportunities particularly in this instance for pelagic species like mackerel and sailfish, and all the flow-on benefits that brings to coastal communities” he said.

Woodside Acting Executive Vice President & Chief Operating Officer Australia Breyden Lonnie welcomed this latest addition to Western Australia's expanding network of artificial reefs.

"Woodside is excited to collaborate with Recfishwest and the local fishing community to bring this new reef to life. The reef is expected to provide a productive marine habitat for diverse species of algae and corals, supporting an abundance of fish life to feed and shelter. Not only is the reef expected to contribute to marine biodiversity; it will also be an added drawcard to boost fishing tourism to the Pilbara, supporting the local economy and communities," he said.

The installation of the reef was funded by Woodside and its Scarborough Joint Venture partners JERA Australia and LNG Japan. Woodside also acknowledges its joint venture partner in the Enfield Joint Venture, Mitsui E&P Australia, for its contribution to the acquisition of the concrete modules for the reef.

Recfishwest will share updates as this vibrant new asset comes to life. Local fishers in the Pilbara region, families, and visitors can look forward to enjoying a thriving marine environment and improved fishing experiences in the years ahead.

About Woodside Energy

Woodside is a global energy company. Driven by a spirit of innovation and determination, we established the liquefied natural gas industry in Australia in the 1980s. Today, our strategy is to thrive through the energy transition with a resilient and diversified portfolio of oil, gas and new energy projects in Australia, North America and Africa.

About Recfishwest

Recfishwest is the peak body representing the interests of the cast of 750,000 West Aussie recreational fishers. We are a not-for-profit organisation which strives to ensure high-quality recreational fishing experiences are maintained and enjoyed, as an integral part of the WA lifestyle.

Media contact

Woodside

Christine Abbott

M: +61 484 112 469

E: christine.abbott@woodside.com

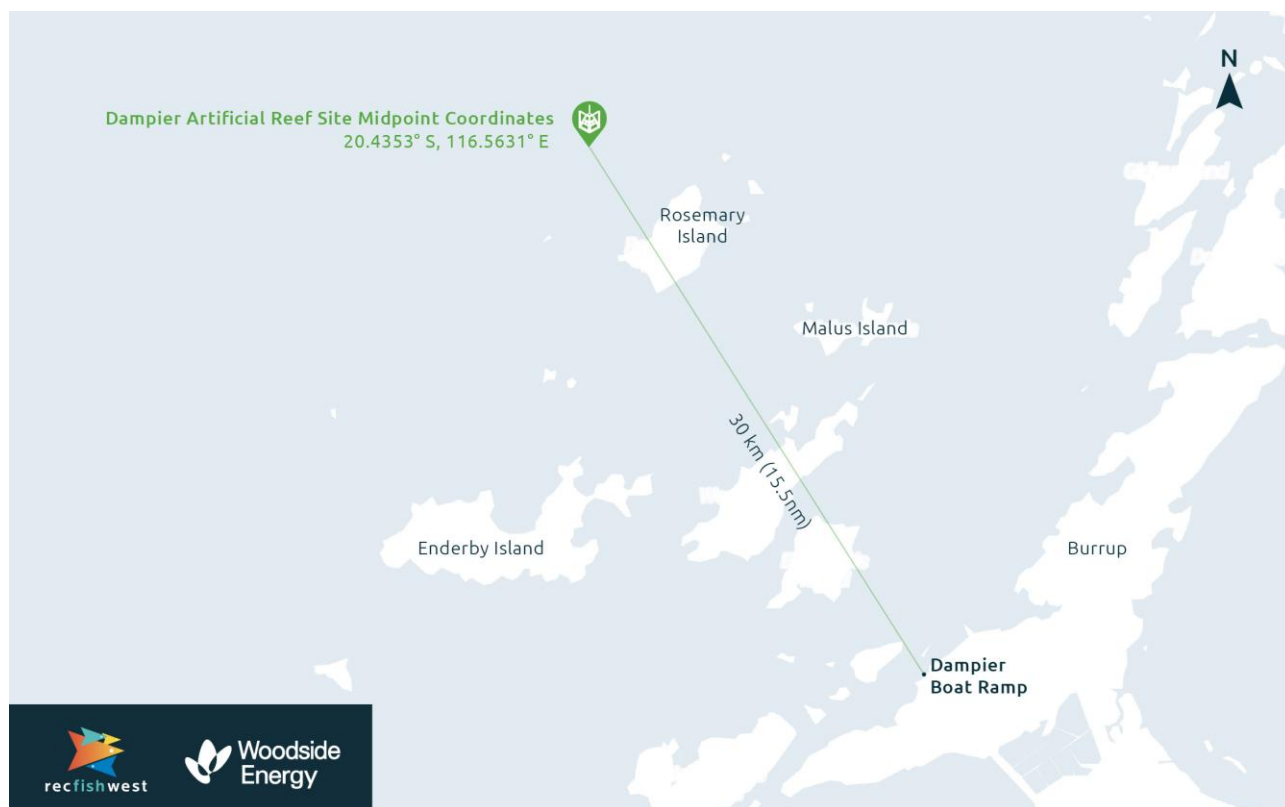
Recfishwest

Ben Carlish

M: +61 434 942 678

E: ben@recfishwest.org.au

Location



<https://recfishwest.org.au/our-services/artificial-reefs/>