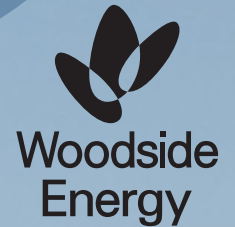


# LET'S TALK

EDITION 2 | APRIL 2024

OUR PLANS,  
YOUR SAY



## NINGALOO OUTLOOK SYMPOSIUM

To increase the ecological understanding of the Ningaloo Coast World Heritage Area's deep and shallow reefs and shark and turtle populations, Woodside and CSIRO have partnered on the Ningaloo Outlook Marine Research Partnership.

For Ningaloo Outlook (Phase 1 and 2) over A\$12million has been invested in scientific research to further develop new knowledge about the Ningaloo Coast World Heritage Area. The initial Phase 1 was in partnership with BHP, now part of the merged Woodside Energy.

The 300 km long Ningaloo Reef is the largest fringing coral reef on the west coast of any continent. With shallow lagoons and deeper waters offshore, the reef is home to a variety of marine life and diverse habitats.

The sixth **Ningaloo Outlook Symposium** recently enabled marine park managers, the scientific community and interested stakeholders to discuss the partnership's 2023 research findings.



[Click here to view footage shown at the 2024 Ningaloo Outlook symposium.](#)



## THE RUNDOWN

On 1 March 2024, Woodside received Commonwealth environmental acceptance for the Griffin Field Decommissioning (End State) Environment Plan, supporting the staged decommissioning program for the Griffin oil and gas field, located off the Western Australian (WA) coast 65 km north-west of Onslow and 94 km north-east of Exmouth.

During late 2023, Woodside received acceptance for other Griffin decommissioning activities, with several activities already safely and successfully completed.

### WHAT IS DECOMMISSIONING?

Decommissioning involves managing infrastructure that is no longer required in a timely, safe, and culturally and environmentally responsible manner.

### GRIFFIN FIELD – FAST FACTS

- Field discovered 1989
- Production period 1994 – 2009
- Gas produced for the WA domestic gas market - 62 trillion cubic feet
- Barrels of oil produced - 167 million

### Griffin gas export pipeline removed safely, offshore from Onslow

Woodside recently completed staged decommissioning activities under the Griffin Gas Export Pipeline (GEP) Decommissioning Environment Plan, which was accepted on 30 November 2023. Woodside removed ~25 km of the pipeline offshore within Commonwealth waters at depths ranging from 52 m to 127 m, approximately 41 km north-west of Onslow.

During production, the 62 km long and 30 cm in diameter Griffin GEP transported gas from the field to the former onshore Griffin gas export facility south of Onslow for use by WA businesses and households.

The decommissioning of the pipeline's WA State waters section and related onshore infrastructure requires separate state approvals. Woodside will engage local stakeholders to understand their views on potential decommissioning options for this pipeline portion.

Woodside is now undertaking a post-removal assessment of the Commonwealth section of the Griffin pipeline to inform future decommissioning activities in the region. Woodside will continue to assess decommissioning options case-by-case, guided by science, consultation, and legislative requirements.

To stay updated, subscribe for future editions at [woodside.com/what-we-do/consultation-activities](https://www.woodside.com/what-we-do/consultation-activities)



## COMMUNITY SPOTLIGHT

### Support for Murujuga

Woodside is proud to be a signatory of Murujuga Aboriginal Corporation's (MAC) Statement of Intent as part of our unwavering support for World Heritage Listing over the Murujuga Cultural Landscape, and our ongoing support for the protection and management of Murujuga's outstanding heritage values. We are committed to and support the protection of Aboriginal cultural heritage and continue to work closely with Traditional Custodians in the areas we operate.

Woodside was one of 11 signatories to the MAC Statement of Intent at a ceremony held at Hearson Cove on Murujuga Country. Other parties to the Statement of Intent included MAC (as the representative body for five Traditional Custodian groups, being Ngarluma, Yaburara, Yindjibarndi, Mardudhunera and Wong-Goo-tt-oo peoples), the Government (Premier, Environment Minister and Aboriginal Affairs Minister), Commonwealth Government (Environment Minister), Rio Tinto, Pardaman, Yara Pilbara, Horizon Power and the City of Karratha.

The Statement of Intent sets out the guiding principles for MAC, government and industry parties to work together to negotiate a cooperative Strategic Head Agreement in relation to the management, protection, and conservation of the Murujuga Cultural Landscape in support of the World Heritage nomination of this landscape.

Woodside takes its responsibility to protect and manage cultural heritage seriously, including through taking reasonable and practical measures across our operations and growth projects to minimise our emissions.



## TALKING POINT

### Supporting Science at Scott Reef

Out on the edge of Australia's continental shelf sits the north and south reefs and sandy islet of Scott Reef.

Located about 425 km north-west of Broome, to reach Scott Reef a boat would need to travel from the closest point on the WA coast for 270 km across the Indian Ocean.

Scott Reef and other reefs in the Pilbara and Kimberley were considered "poorly understood" by the Australian Institute of Marine Science (AIMS) three decades ago. However, over the last 30 years, more than 50 expeditions by numerous marine scientists have led to extensive research and understanding of Scott Reef.

In 1993, Woodside supported AIMS' extensive survey of coral and fish communities. This led to the establishment of a long-term monitoring program in 1994, which continues today. The Scott Reef coral reef monitoring program is globally one of the few continuous programs providing insight into the health and condition of resident corals and fish.

Woodside partnered with the WA Museum in 1998, contributing to research on oceanography and the biology and ecology of the resident species. The partnership has enabled long-term research to understand the reef's health and how it changes through time. WA Museum scientists visited Scott Reef in 1984 to carry out extensive surveys to sample fauna. Then, in 2006

returned with Woodside's support and catalogued 1,897 marine life species, including 262 new discoveries.

The WA Museum partnership included the Woodside Collection Project, focused on the marine life of the Dampier Archipelago and Kimberley. Over 55,000 specimens were collected and 700 new species were identified as part of the large Australian biodiversity project.

**The wide-ranging Scott Reef research projects have revealed important insights into a complex ecosystem and have delivered a wealth of knowledge to support Woodside's long-term environmental planning and management.**

Woodside is consulting on the Browse State Wellhead Decommissioning Environment Plan (EP), involving decommissioning options for three historical wellheads in WA State waters, approximately 430 km north of Broome. **[View the consultation information sheet.](#)**

In preparing the EP, Woodside's intent is to minimise environmental and social impacts and is seeking stakeholder input to inform Woodside's development of the EP.

**[Click here to watch Journeys of Discovery - Coral Reefs.](#)**

# COMMUNITY CONVERSATIONS



## Upcoming engagement opportunities

### DAMPIER

5 May 2024 | 9:00am - 12:00pm

Dampier Beachside Markets, Hampton Oval

### EXMOUTH

19 May 2024 | 8:00am - 12:00pm

Exmouth Community Markets, Federation Park

*Dates and times subject to change.*

Woodside is consulting with local communities at local events so you can easily come and chat to us about our operations, decommissioning activities, or proposed projects.

Recently our team talked with community members at the Karratha Shopping Centre and the Dampier Beachside Markets about Environment Plans for the Scarborough State Trunkline Operations and Pluto Operations. We also meet quarterly

with Community Liaison Groups in Karratha and Exmouth where we communicate updates and consult with community members on a range of relevant topics.

If you're interested in what Woodside has planned on land and sea, come and chat to our friendly team and follow the [Woodside North West Facebook page](#) for updates. You can also read our recent [Karratha Community Update here](#).



## HAVE YOUR SAY

Woodside consults relevant persons while preparing our Environment Plans to notify them, obtain their input and to assist Woodside to confirm current measures or identify additional measures, if any, that may be taken to lessen or avoid potential adverse impacts of the proposed activity on the environment.

We welcome your input so please contact us if you'd like to discuss your functions, interests or activities which may be affected by our proposed activities.

Environment Plan	Activity Type	Location	Consultation Dates
<b>Browse State Wellhead Decommissioning</b>	Decommissioning	430 km north of Broome	25 March - 3 May 2024
<b>North Rankin Complex Operations</b>	Operations	135 km offshore of Dampier	22 April - 22 May 2024
<b>WA-550-P Exploration Drilling</b>	Exploration	190 km north-west of Dampier	-May - June 2024
<b>Angel Carbon Capture and Storage Geophysical and Geotechnical Surveys</b>	Survey	125 km north-west of Dampier	-May - June 2024
<b>North West Shelf Phase 1 Plug &amp; Abandonment</b>	Decommissioning	-117 km north-west of Dampier	-May - June 2024
<b>Julimar Operations</b>	Operations	160 km north-west of Dampier	-May - June 2024

You can access our consultation information, provide feedback and subscribe for updates by visiting [www.woodside.com/what-we-do/consultation-activities](http://www.woodside.com/what-we-do/consultation-activities) or click [here](#).

## PROGRESS SNAPSHOT

Environment Plan	Activity Type	Date Accepted	Status
<b>Griffin Field Decommissioning (End State) (Griffin Field Deviation / Griffin Leave In-situ)</b>	Decommissioning	1 March 2024	In progress
<b>Stybarrow Decommissioning and Field Management</b>	Decommissioning	8 January 2024	In progress
<b>Stybarrow Plug and Abandonment</b>	Decommissioning	21 December 2023	In progress
<b>WA-34-L Pyxis Drilling and Subsea Installation (Revision)</b>	Project	21 December 2023	Drilling to commence around May 2024
<b>Scarborough Seabed Intervention and Trunkline Installation</b>	Project	13 December 2023	In progress
<b>Scarborough WA-61-L and WA-62-L Subsea Infrastructure Installation</b>	Project	8 December 2023	In progress
<b>Scarborough Drilling and Completions</b>	Project	1 December 2023	In progress
<b>Griffin Gas Export Pipeline Decommissioning</b>	Decommissioning	30 November 2023	Completed
<b>TPAO3 Well Intervention</b>	Project	28 November 2023	In scheduling
<b>Griffin Decommissioning and Field Management</b>	Decommissioning	21 November 2023	In progress

You can view Commonwealth Environment Plans for approved activities and operations by visiting NOPSEMA's website [info.nopsema.gov.au/home/approved\\_projects\\_and\\_activities](http://info.nopsema.gov.au/home/approved_projects_and_activities)

## EMBA<sup>s</sup> AND OIL SPILL MODELLING

Let's talk about EMBA<sup>s</sup> – what they are, and just as importantly, what they're not. When Woodside talks to community members about our activities, we're often asked about the areas marked on our consultation material referred to as the "Environment that May Be Affected" (EMBA).

EMBA<sup>s</sup> are an important part of preparing the environmental and emergency response strategies that underpin the planning for our offshore activities.

They are produced as part of our extensive oil spill modelling and response planning. They represent the largest spatial area where a petroleum activity could potentially have a direct or indirect environmental impact.

### Understanding the EMBA

The EMBA represents the largest, merged area of many potential paths that a highly unlikely oil spill could travel based on predictions around weather, currents, and other conditions at the time. An EMBA is not a predicted impact of a single oil spill, which would be much smaller, and the extent and path of the impact would only be known at the time it occurred.

This means the area the EMBA covers includes locations where planned activities and unplanned events could potentially occur.

### Oil Spill Modelling

While offshore oil spills are extremely rare, it is important oil and gas companies are still ready to prepare for and respond to them. There are several different approaches to oil spill modelling, and Woodside uses these in combination for information about where an oil spill could move, how quickly, and the possible effect of using methods to manage a potential oil spill.

To calculate this, our oil spill modelling involves running many (sometimes hundreds) computer simulations of the same scenario to predict the behaviour of oil under different conditions.

Each simulation is subject to a range of variables, including weather and sea conditions, tides, and times of year. In the model, the oil responds to these conditions and behaves differently in each individual simulation.

Every individual simulation is overlaid on top of the next, allowing statistical analysis of the possible area the oil spill

could travel in the highly unlikely event that a spill occurs. The smooth boundary drawn around all these computer simulations of the spill creates the EMBA.

The models process the information based on an assumption there is no emergency response, which would of course not be the case in a real emergency.

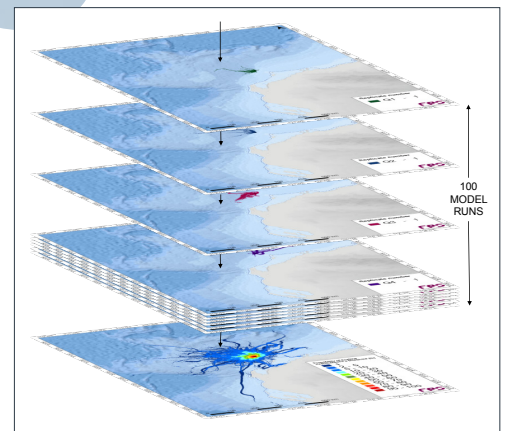
Oil spill modelling helps us develop our oil spill emergency management plans and assists in preparedness and response planning. Woodside conducts regular emergency response training exercises involving multiple facets of the business so our teams are ready to respond should they ever need to.

The many simulations used to underpin our planning are estimates and predictions only. It is not possible to exactly predict the outcome until the exact weather and other conditions are known if an oil spill event occurs.

### Emergency Management Plans

The emergency management plan informed by the oil spill modelling is submitted to both State and Commonwealth regulators for approval along with all other planning documents for our activities.

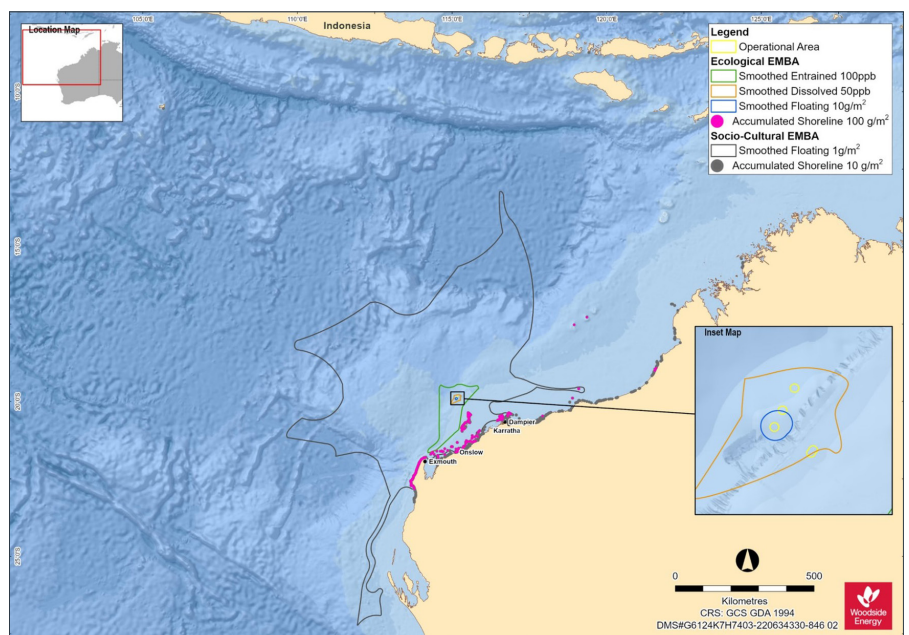
Woodside, in more than 60 years, has not experienced any significant uncontrolled release of oil or gas to the environment as a result of loss of well control.



**Figure 1:** The first stage in EMBA creation is running computer simulations (model runs). Figure 1 shows the model runs for the WA-34-L Pyxis Drilling and Subsea Installation Environment Plan.

Nevertheless, our extensive planning continues, drawing on international good practice, so the impacts and risks associated with our activities are detailed, evaluated and managed to a level that is as low as reasonably practicable.

We are committed to continuous improvement and share our expertise with our peers and take the lessons learned from other operators to incorporate into our management processes.



**Figure 2:** The EMBA is a culmination of all the computer simulations with a smooth boundary. Figure 2 shows the final EMBA for the WA-34-L Pyxis Drilling and Subsea Installation Environment Plan.