



Woodside

SANGOMAR FIELD DEVELOPMENT - PHASE 1

## SOCIO-ECONOMIC IMPACT OVERVIEW

MAY 2021



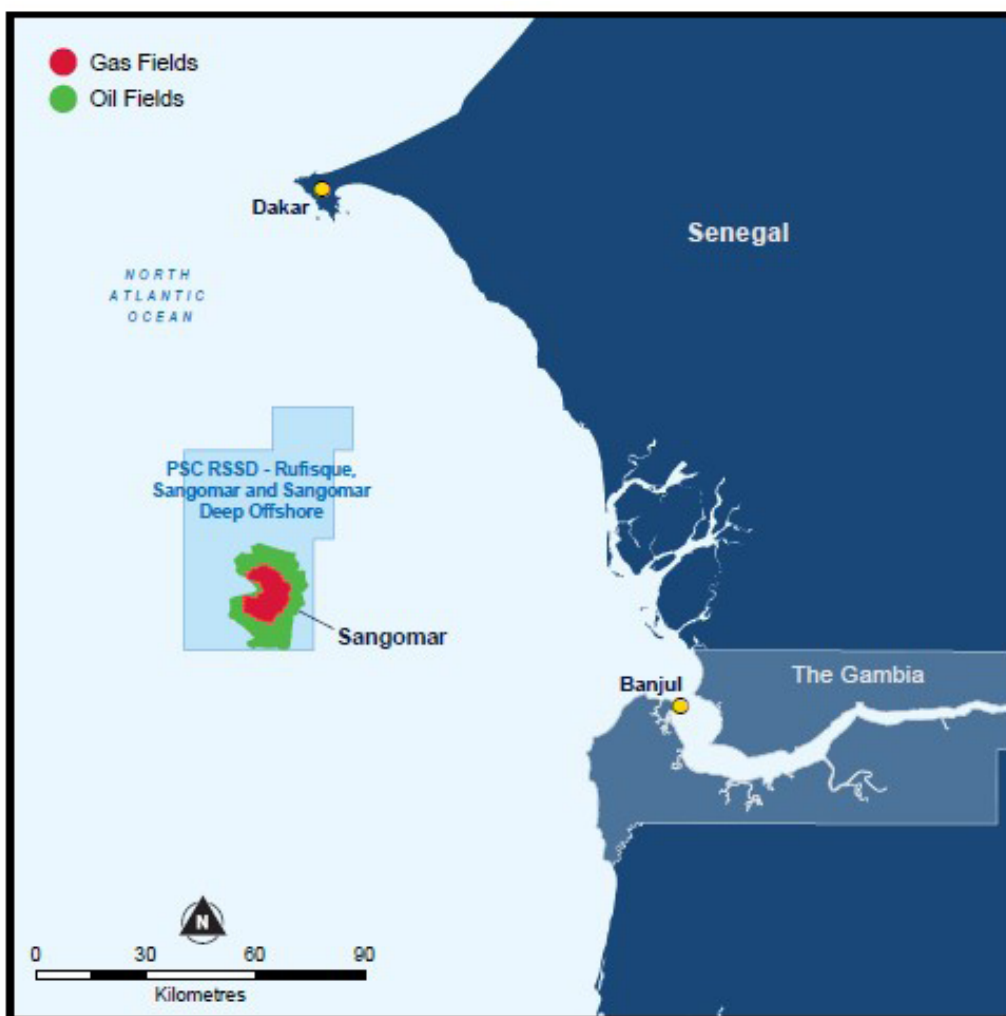
The Sangomar Field Development Phase-1 Environmental and Social Impact Assessment (ESIA) has been prepared according to Senegalese law and good international industry practise to assess the potential benefits and impacts that activities associated with the project may have on the physical, ecological and socio-economic environment.



In relation to socio-economic benefits and impacts from the Sangomar Field Development – Phase 1, the ESIA addresses fisheries, health and safety, employment and training, local procurement and the broad national economy.

This socio-economic impact assessment focused on the geographical area bounded by Dakar in the north and the northern border of The Gambia, based on the assumption that this would be the area which would be potentially impacted by planned activities of the Sangomar Field Development – Phase 1, such as vessel movements between the Development area and the Port of Dakar.

The ESIA concludes the Sangomar Field Development – Phase 1 will have minimal impact on the Senegalese socio-economic environment and that there will be overall benefits gained from the Sangomar Field Development – Phase 1 activities. This does not mean the Sangomar Field Development – Phase 1 does not consider the socio-economic receptors as extremely important to local communities.



Sangomar Map

The Sangomar Field Development – Phase 1 is expected to be Senegal's first offshore oil development and is projected to deliver significant benefits for the country.





## ECONOMIC BENEFITS

One of the key benefits of the Sangomar Field Development – Phase 1 will be the revenue generated for the Government of Senegal throughout the life of the project. The Sangomar Field Development – Phase 1 is projected to generate between US\$2 billion to US\$4 billion of direct revenue for the Government of Senegal over the first phase of development. This includes fees and corporate income tax to be paid by the joint venture and revenues attributable to the Government under the Production Sharing Contract (PSC). In addition, the Government will receive revenue through Société des pétroles du Sénégal (PETROSEN) equity participation in the Sangomar Field.



Dakar city

### SANGOMAR FIELD DEVELOPMENT PHASE-1 SUMMARY

|                             |   |
|-----------------------------|---|
| Type of development         | Offshore oil development                                    |
| Block                       | Sangomar Deep Offshore and Sangomar Offshore                |
| Location                    | 100 km south of Dakar and 90 km from the closest land point |
| Water depth                 | ~700 -1400 m  |
| Target first oil production | 2023  |

### RUFISQUE OFFSHORE, SANGOMAR OFFSHORE AND SANGOMAR DEEP (RSSD) JOINT VENTURE

|  |          |        |
|--|----------|--------|
| Equity participation in the Sangomar Field Development - Phase 1 | Woodside | 68,33% |
|  | PETROSEN | 18%    |
|  | FAR      | 13,67% |

# CORPORATE AND SOCIAL RESPONSIBILITY

Woodside is committed to working sustainably as it is fundamental to maintaining our social license to operate. Our social licence to operate is supported in part by our community social investment.

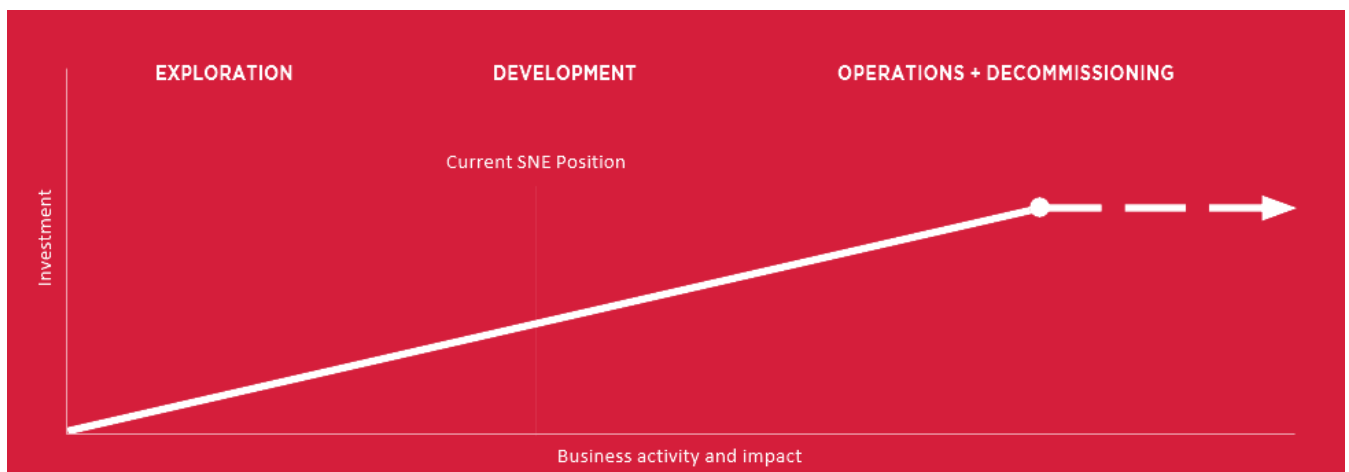
Woodside is committed to delivering long-term economic and social benefits for neighbouring communities of the Sangomar Field Development – Phase 1 and to Senegal. In support of this objective, the RSSD Joint Venture has maintained a social investment program since 2015, which has included the following projects:

- + the British Council's Great Entrepreneur program, a competition for local projects with training and coaching provided to the winner; ECOBAG, a local business which collects plastic waste and recycles it into plastic pellets for onward sale;

- + Providing English language and industry awareness training to university students studying in oil and gas-related fields and government agencies.

Woodside's approach to social investment in Senegal will be guided by the approved ESIA and the company's social investment strategy, which implements a phased approach to social investment that supports the company's producing assets, exploration and development portfolios.

All social investment opportunities that may be considered will be assessed following an internal review process by the RSSD Joint Venture which includes a robust due diligence process ensuring adherence to Senegalese law, relevant anti-bribery and corruption laws and Woodside policies and procedures regarding social investment. Key stakeholders in potentially affected communities will also be consulted on proposed social investment opportunities, prior to any commitment by Woodside and the RSSD Joint Venture.



## CAPACITY BUILDING

The RSSD Joint Venture has an ongoing commitment under the PSC to provide capacity building, which to date has delivered several programs. Future capacity building will be delivered in phases according to the timing of Sangomar Field Development – Phase 1 activities.

Woodside is committed to working with the Institut National du Pétrole et du Gas (INPG) to develop national expertise in the oil and gas industry. A coordinated approach to capacity building which delivers independent, consistent and standardized training to institutions in a timely manner, is viewed as most beneficial to the industry. This approach requires the collaboration between all actors in the field including oil and gas companies, institutions and INPG to determine and prioritise capacity building objectives.





# COMMUNITY CONSULTATION

Woodside is committed to building long-term and meaningful relationships with the communities in which we are active. This is supported by a commitment to understanding and managing potential environment and socio-economic impacts. As detailed in the ESIA, Woodside will use various communication tools and consultations to ensure affected communities are regularly kept abreast and consulted on activities related to the Sangomar Field Development – Phase 1. This may include, but is not limited to:

- + Engagement with local communities through for and informal engagement activities (committees, local media, town visits)
- + Formal coordination with Government agencies
- + Holding public meetings, supported by Government which are open to all stakeholders and designed to provide updated information about the progress of the Sangomar Field Development – Phase 1
- + Ongoing advice and notifications of project activities through local media and authorities such as CLPA's and community organisations

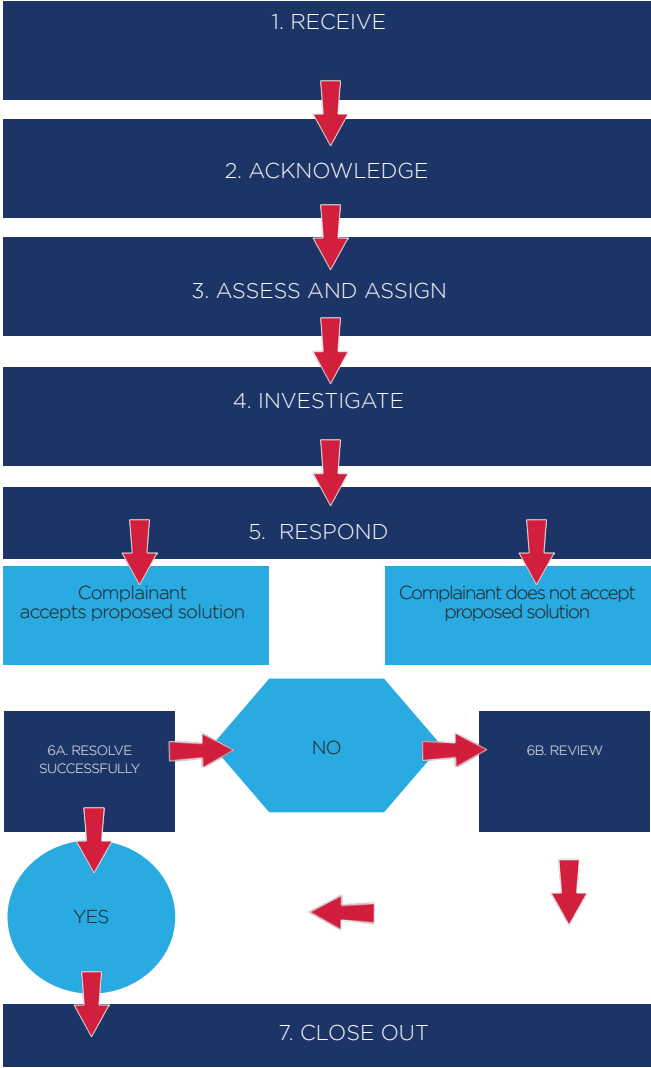
Woodside will also develop communication materials in French, Wolof and Serere to ensure that all stakeholders are actively engaged in communications throughout the Sangomar Field Development – Phase 1.

These stakeholder engagement activities will be publicly disclosed through annual reports provided to the Government of Senegal and as part of Woodside's Sustainable Development Report.

Woodside will maintain a community grievance process for the life of the Sangomar Field Development – Phase 1. The community grievance process aims to resolve complaints as quickly as possible at the local level through company processes. While Woodside will ensure every effort is made to resolve conflicts through agreement, engagement of a third party for assistance may be required.



## WOODSIDE COMMUNITY GRIEVANCE PROCESS







**Woodside Energy** - BP 15 817 - Immeuble Serenity - Route du Meridien President - 2<sup>ème</sup> et 3<sup>ème</sup> Etage - Dakar, Sénégal

☎ : +221 33 864 45 54 - 📞 : +221 76 223 43 41 @ : developpementsangomar@woodside.com.au • [www.woodside.com.au/our-business/senegal](http://www.woodside.com.au/our-business/senegal)